

# SLC

## ACTIVEWEAR



T-SHIRTS, FLEECE  
& ACCESSORIES!



2023 APPAREL GUIDE



ON THIS PAGE (LEFT TO RIGHT):  
Gildan 64200 in Red; 64200 in White;  
and 64200 in Navy



@SLCACTIVEWEAR #SLCACTIVEWEAR



ON THE COVER: Independent  
Trading Co. IND4000 in Houndstooth



ON THIS PAGE:  
BELLA + CANVAS 1002 in White;  
& BELLA + CANVAS 3739 in Heather Charity Pink

# TABLE OF CONTENTS

- 2 MICRO RIB RESURGENCE**  
Tank Tops from BELLA + CANVAS
- 4 RICH, EARTHY YET WARM & INVITING**  
Cotton Tees from BELLA + CANVAS
- 8 WHAT COLORS WERE TRENDING IN THE 90'S?**  
Cotton Tees from BELLA + CANVAS
- 9 DON'T FORGET TO LAYER IN YOUR COLOR!**  
Long sleeved Tees from BELLA+CANVAS
- 10 LAYER, LOVE AND LOUNGE!**  
Hoodies from BELLA + CANVAS
- 12 TODAY'S TOP HITS!**  
Zip Hood from BELLA + CANVAS
- 13 IT'S ELECTRIC!**  
Sweatshirts from BELLA + CANVAS
- 20 CLASSIC, FEMININE, FOREVER**  
Tees from BELLA + CANVAS
- 22 CROP TOP: A CATEGORY OF IT'S OWN**  
Crop Tops from BELLA + CANVAS
- 24 GO GET THE GILDAN!**  
Sweatshirts from GILDAN
- 26 DID YOU KNOW?**  
Gildan as a sustainable brand
- 30 THE FABRIC OF YOUR PRINTING LIFE: RING SPUN COTTON**  
Premium Tees and Long sleeved tees from Next Level Apparel
- 33 CVC ORIGINAL FAVORITE**  
The Original CVC from Next Level Apparel
- 38 NEW YEAR, NEW STYLE!**  
CVC Relaxed Tees from Next Level Apparel
- 40 FESTIVAL: IT'S A VIBE!**  
Festival Collection from Next Level Apparel
- 50 NOW YOU SEE ME, NOW YOU DON'T**  
Hoodies, Sweaters, Pants and Shorts from Independent Trading Co.
- 52 FANCY FLANNELS**  
Unisex flannels from Independent Trading Co.
- 53 THE SOFTER SIDE OF INDEPENDENT TRADING CO.**  
Hoodies from Independent Trading Co.
- 54 PLUSH, SPONGE, SPECIAL**  
Unisex Sweaters from Independent Trading Co.
- 56 DIRTY JOBS: WORK WEAR**  
Workwear jackets and vests from Independent Trading Co.
- 60 SET YOUR HEART OUT!**  
Hoodies, Pants and Shorts from Independent Trading Co.
- 62 CROSS GRAIN LEGENDS BEAUTY AND THE BRAUN**  
Hoodies from Independent Trading Co.
- 66 A NEW COLOR PALETTE WITH A 10 OZ CLASSIC**  
Hoodies from Independent Trading Co.
- 68 LOOPTY LOO / LIGHTWEIGHT TERRY CREW**  
Sweatshirt and Hoodies from Independent Trading Co.
- 70 BOLD, BRIGHT AND BASIC**  
Neon hoodies from Independent Trading Co.
- 71 FULL CREW**  
Pullover from Independent Trading Co.
- 72 STREET SCENE**  
Streetwear essentials from Shaka Wear
- 76 THAT'S STREETWEAR!**  
Jackets from Shaka Wear
- 80 LOOK GOOD, FEEL GOOD**  
Beanies, Straw Hat and Caps from Decky
- 88 INDEX**





ON THIS PAGE: BELLA + CANVAS 1002 in White



Kick your tired tanks to the curb, a resurgence on the much loved 90's tank hits at the perfect length and is made of soft and stretchy micro rib jersey. And because there's endless ways to pair, we won't judge if you want every color.

**1002**  
**WOMEN'S MICRO RIBBED SPAGHETTI STRAP**

Sustainably Produced.

Features: Semi-relaxed fit. 1x1 Micro Rib. Flat spaghetti straps. Flattering curved neckline. 3/4 length silhouette.

Fabrication: 52% Airlume combed and ring-spun cotton, 48% polyester, 32 singles, 5.4oz.

Sizing: S-2XL



Athletic Heather



Deep Heather



Heather Pink Gravel



Solid Black Blend



Solid White Blend

**1081**  
**WOMEN'S MICRO RIBBED TANK**

Sustainably Produced.

We've upgraded the go-to ribbed tank with a better fit, sleek cut and breathable, Heather CVC cotton. The full-length micro ribbed tank features a rounded, square neckline and a slim fit. Subtle 1x1 ribbed cotton completes the look.

Features: Side-seamed. Slim fit. 1x1 Micro Rib. Rounded, square neckline.

Fabrication: 52% Airlume combed and ring-spun cotton, 48% polyester, 32 singles, 5.4oz

Athletic Heather: 90% Airlume combed and ringspun cotton, 10% Polyester

Sizing: S-2XL



Athletic Heather



Deep Heather



Heather Pink Gravel



Solid Black Blend



Solid White Blend



**BELLA + CANVAS.**



ON THIS PAGE (LEFT TO RIGHT):  
BELLA + CANVAS 1081 in Deep  
Heather; and 1081 in Heather  
Pink Gravel





ON THIS PAGE: BELLA + CANVAS 3001 in Rust



**RICH, EARTHY YET  
WARM & INVITING**



The rust pairs well with chocolate brown, terracotta and subtle shades of clay.

Cut from the highest quality cotton, our signature airlume crew tee is a tried and true staple. Unparalleled comfort makes it ideal for everyday wear, and a modern, tailored fit makes it anything but basic.

Available in 100+ colors.



**BELLA+CANVAS.**



ON THIS PAGE (LEFT TO RIGHT):  
BELLA + CANVAS 3001 in Burnt Orange;  
3001 in Vintage Black; and 3001 in Rust

**3001  
UNISEX JERSEY SHORT SLEEVED TEE**

Sustainably Produced.

This updated unisex essential fits like a well-loved favorite, featuring a crew neck, short sleeves and designed with superior combed and ring-spun cotton that acts as the best blank canvas for printing.

Features: Side-seamed. Retail fit. Unisex sizing. Crew neck. Short sleeves. Shoulder taping. Tear away label.

Fabrication: 100% Airlume combed and ring-spun cotton, 32 singles 4.2 oz. (Ash - 99% Airlume combed and ring-spun cotton, 1% poly)

Sizing: XS-5XL



Aqua



Chestnut



Mustard



Rust



Toast

AND  
MORE!





ON THIS PAGE (LEFT TO RIGHT):  
BELLA + CANVAS 3480 in Leaf; 3480 in Aqua Triblend;  
3480 in Team Purple; 3480 in Neon Orange;  
and 3480 in Neon Pink

**3480  
UNISEX JERSEY TANK**

Sustainably Produced.

Features: Side-seamed. Retail fit. Unisex sizing. Crew neck.  
Available in two-tone color options. Tear away label.

Fabrication: 100% Airlume combed and ring-spun cotton,  
32 singles 4.2 oz. (Ash - 99% Airlume combed and ring-spun cotton,  
1% poly)

Sizing: XS-2XL

-  Aqua Triblend
-  Leaf
-  Neon Orange
-  Neon Pink
-  Team Purple
- AND MORE!



**3901**  
**UNISEX SPONGE FLEECE RAGLAN SWEATSHIRT**

Sustainably Produced.

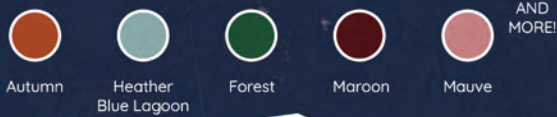
Spun from plush sponge fleece fabric, this remarkably soft unisex pullover crewneck sweatshirt lends itself to daily wear and year-round layering.

Features: Side-seamed. Unisex sizing. Crew neck. Ribbed cuffs and waistband. Tear away label.

Fabrication:

- Solid Colors: 52% Airlume combed and ring-spun cotton, 48% polyester fleece, 32 single 8.0 oz
- Triblend Colors: 50% Airlume combed and ring-spun cotton, 37.5% polyester fleece, 12.5% rayon, 32 single 8.2 oz
- Heather CVC Colors: 52% Airlume combed and ring-spun cotton, 48% polyester fleece, 32 single 8.0 oz
- Black Heather: 85% Airlume combed and ring-spun cotton, 15% polyester fleece
- Athletic Heather: 90% Airlume combed and ring-spun cotton, 10% polyester fleece, 32 single 8.0 oz
- Grey Acid Fleece: 52% Airlume combed and ring-spun cotton, 48% polyester fleece, 32 single 8.0 oz

Sizing: XS-2XL



**3501CVC**  
**MEN'S HEATHER CVC LONG SLEEVED TEE**

Sustainably Produced.

Features: Side-seamed. Retail fit. Ribbed cuff. Tear away label.

Fabrication:

- Heather CVC/Blend Colors: 52% Airlume combed and ring-spun cotton, 48% poly. 32 single. 4.2 oz. (Ath. Heather - 90% combed and ring-spun cotton 10% poly)
- Black Heather CVC: 90% Airlume combed and ring-spun cotton, 10% poly

Sizing: XS-3XL



**ON THIS PAGE (LEFT TO RIGHT):**  
BELLA + CANVAS 3901 in Maroon;  
BELLA + CANVAS 3501CVC in Heather  
Deep Teal; and 3501CVC in Heather Navy





## WHAT COLORS WERE TRENDING IN THE 90'S?

ON THIS PAGE (LEFT TO RIGHT):  
BELLA + CANVAS 3001CVC in  
Heather Aqua; and 3001CVC in Heather  
Raspberry



The most popular clothing colors were blue, green, orange, pink, and yellow, often paired together in patterns inspired by comic books and pop art.

This updated essential unisex heathered T-shirt fits like a well-loved favorite, featuring a crew neck, short sleeves and designed with superior Airlume combed and ring-spun cotton that acts as the best blank canvas for printing.



**BELLA+CANVAS.**





**3001CVC  
UNISEX HEATHER CVC SHORT SLEEVED TEE**

Sustainably Produced.

Features: Side-seamed. Retail fit. Unisex sizing. Crew neck. Short sleeves. Shoulder taping. Tear away label.

Fabrication:

- Heather CVC Colors: 52% Airlume combed and ring-spun cotton, 48% poly, 32 singles 4.2 oz.
- Ath. Heather and Black Heather CVC: 90% Airlume combed and ring-spun cotton, 10% poly, 32 singles 4.2 oz.
- Heather Prism Blue: 90% Airlume combed and ring-spun cotton, 10% polyester, 32 singles 4.2 oz.

Sizing: XS-5XL



**DON'T FORGET TO LAYER  
IN YOUR COLOR!**

**3501  
UNISEX JERSEY LONG SLEEVED TEE**

Sustainably Produced.

This classic unisex jersey long sleeve fits like a well-loved favorite, featuring a classic crew neck, long sleeves and superior combed and ring-spun jersey cotton that acts as a blank canvas for printing.

Features: Side-seamed. Retail fit. Crew neck. Long sleeves. Tear away label. Ribbed cuff.

Fabrication: Solid Colors: 100% Airlume combed and ring-spun cotton, 32 singles 4.2 oz. (Ash - 99% Airlume combed and ring-spun cotton, 1% poly)

Sizing: XS-3XL



**ON THIS PAGE (LEFT TO RIGHT):  
BELLA + CANVAS 3501 in Kelly;  
and 3501 in Berry**





LAYER, LOVE AND LOUNGE!



ON THIS PAGE (LEFT TO RIGHT):  
BELLA + CANVAS 3739 in Yellow;  
BELLA + CANVAS 3719 in Teal;  
and 3739 in True Royal

**BELLA + CANVAS**



The Bella + Canvas fleece is spun from a plush fabric that is made up of cotton and polyester fibers, this hoodie features an up-to-date fit, kangaroo pocket, ribbed cuffs and waistband.

Choose your favorite from the solid and DTG fleece colors.

Features: Side-seamed. Retail fit. Unisex sizing. White cord drawstring. Kangaroo pockets. Ribbed cuffs and waistband.



**3719**  
**UNISEX SPONGE FLEECE PULLOVER HOODIE**

Sustainably Produced.

**Fabrication:**

- Solid Colors: 52% Airlume combed and ring-spun cotton, 48% polyester fleece, 32 singles 8.0 oz. (Ath. Heather - 90% combed and ring-spun cotton, 10% poly)
- Heather Navy: 60% Airlume combed and ring-spun cotton, 40% polyester fleece, 32 singles 8.0 oz.
- DTG Colors: 70% Airlume combed and ring-spun cotton, 30% polyester fleece with 100% Airlume combed and ring-spun cotton-face, 32 singles 8.0 oz
- Black Heather: 85% Airlume combed and ring-spun cotton, 15% polyester fleece
- Athletic Heather: 90% Airlume combed and ring-spun cotton, 10% polyester fleece

Sizing: XS-3XL



**ON THIS PAGE (LEFT TO RIGHT):**  
BELLA + CANVAS 3719 in Dusty Blue;  
and 3719 in Heather Blue Lagoon



ON THIS PAGE:  
BELLA + CANVAS 3739 in Heather Charity Pink



## TODAY'S TOP HITS!

### 3739 UNISEX SPONGE ZIP HOOD

Sustainably Produced.

An incredibly soft and relaxed unisex full zip up hoodie, spun from a plush poly-cotton blend, will quickly become a go-to essential. Features a relaxed fit, hood with white drawstrings, full zip closure and ribbed cuffs and waistband. Offered in a variety of solid, colorblocked, digital fleece, marble fleece and neon colors.

Features: Side-seamed. Retail fit. Unisex sizing. Full zip closure with white taping. Tear away label. Ribbed cuffs and waistband. Kangaroo pockets. White cord drawstring.

#### Fabrication:

- Solid Colors: 52% Airlume combed and ring-spun cotton 48% poly fleece, 32 single 8.0 oz.
- Black Heather: 85% Airlume combed and ring-spun cotton, 15% polyester fleece
- Athletic Heather: 90% Airlume combed and ring-spun cotton, 10% polyester fleece)
- Heather Navy: 60% Airlume combed and ring-spun cotton, 40% polyester fleece)
- Digital Fleece Colors: 100% polyester fleece, 32 single 8.0 oz.
- Marble Fleece Colors: 85% Airlume combed and ring-spun cotton, 15% polyester fleece, 32 single, 8.0 oz.
- Neon Colors\*: 60% Airlume combed and ring-spun cotton, 40% polyester fleece, 32 single 8.0 oz.
- DTG Colors: 70% Airlume combed and ring-spun cotton, 30% polyester fleece- with 100% Airlume combed and ring-spun cotton-face, 32 single 8.0 oz

Sizing: XS-3XL



Autumn



Heather  
Charity Pink



Kelly



Teal



Team Purple

AND  
MORE!



**BELLA+CANVAS.**





**IT'S ELECTRIC!**

**3945  
UNISEX SPONGE FLEECE DROP SHOULDER SWEATSHIRT**

Sustainably Produced.

A classic unisex pullover crew neck sweatshirt in comfy, super-soft fleece designed for warmth and breathability. Featuring an on-trend drop-shoulder seam and a unisex retail fit. Offered in poly-cotton sponge fleece.

Features: Side-seamed. Retail fit. Unisex sizing. Dropped shoulder. Tear away label. Ribbed cuffs and waistband.

**Fabrication:**

- 52% Airlume combed and ring-spun cotton, 48% polyester fleece, 32 singles 8.0 oz.
- Athletic Heather: 90% Airlume combed and ring-spun cotton, 10% polyester fleece
- DTG Colors: 70% Airlume combed and ring-spun cotton, 30% polyester fleece- with 100% Airlume combed and ring-spun cotton-face, 32 singles 8.0 oz

Sizing: XS-2XL



Dusty Blue



Heather Mustard



Poppy



Strobe



True Royal

AND MORE!

**ON THIS PAGE :**  
BELLA + CANVAS 3945 in Poppy



ON THIS PAGE (LEFT TO RIGHT):  
BELLA + CANVAS 7502 in Atlantic;  
7502 in Storm; and 7502 in Navy



**7502  
WOMEN'S CROPPED FLEECE HOODIE**

Sustainably Produced.

This trendy women's cropped hoodie sweatshirt is a must-have for your fall wardrobe. Its raw edge and dyed to match drawstrings make it fashion forward while the poly cotton brushed fleece brings an unmatched level of comfort.

Features: Dropped shoulder. Dyed-to-match drawcord. Tear away label. Raw hem.

Fabrication: 52% Airlume combed and ring-spun cotton, 48% poly fleece, 32 singles 8.0 oz

Sizing: S-2XL



Black



Heather  
Dust



Military  
Green



Navy



Storm

AND  
MORE!

**BELLA + CANVAS.**



ON THIS PAGE:  
BELLA + CANVAS 7505 in  
Heather French Vanilla

7505  
WOMEN'S RAGLAN PULLOVER FLEECE

Sustainably Produced.

This piece is all about the subtle details. Made with our softest sponge fleece with contoured seaming on raglan sleeves and a flattering neck bind, you won't want another pullover once you try this on.

Features: Side-seamed. Relaxed fit. Bound neck. Contoured seam on sleeves. Raglan sleeve.

Fabrication: 52% Airlume combed and ring-spun cotton, 48% poly fleece, 32 singles 8 o.z

Sizing: S-2XL



Dark Grey



Heather French Vanilla



Heather Mustard



Heather Sand Dune



Navy

AND MORE!





ON THIS PAGE (LEFT TO RIGHT):  
BELLA + CANVAS 7539 in Tan;  
and BELLA + CANVAS 7506 in Heather  
Sand Dune

**BELLA+CANVAS.**





7506  
WOMEN'S CINCHED BOTTOM HOODIE

Sustainably Produced.

The ultimate cropped hoodie. This FWD Fashion style is made with the softest airlume cotton in an oversized, boxy silhouette reminiscent of a classic, unisex hoodie. A cinched elastic hem and mid-length fit with seamed detailing add new flair to this essential piece. Layer it, lounge in it, or take it on the go.

Features: Mid-length. Boxy, oversized fit. Cinched elastic hem.

Fabrication: 52% Airlume combed and ring-spun cotton, 48% polyester fleece, 32 singles, 8.0oz.

- Athletic Heather: 90% Airlume combed and ring-spun cotton, 10% polyester fleece

Sizing: S-2XL



Athletic Heather



Black



Heather Sand Dune



Military Green

7539  
WOMEN'S FULL ZIP HOODIE

Sustainably Produced.

The women's full zip hoodie is here to take over the outfit rotation and make every other hoodie jealous. This exceptionally soft, mid-length fleece hoodie layers just right over or under jackets, thanks to a sleek, pocket-free design. Semi set in sleeves, a single line hood and a dyed-to-match, full length zipper complete the look.

Features: Mid-length. Semi set-in sleeves. Single line hood. Dyed-to-match zipper. Pocket-free design.

Fabrication: 52% Airlume combed and ring-spun cotton, 48% polyester fleece, 32 singles, 8.0oz.

Sizing: S-2XL



Athletic Heather



Black



Military Green



Tan



ON THIS PAGE (LEFT TO RIGHT):  
BELLA + CANVAS 7505 in Heather Sand Dune;  
BELLA + CANVAS 7506 in Military Green;  
and BELLA + CANVAS 7539 in Tan



**ON THIS PAGE:**  
BELLA + CANVAS 7511 in Mauve

**7511  
WOMEN'S SPONGE FLEECE CREWNECK SWEATSHIRT**

Sustainably Produced.

Features: Mid-length. Slim fit. Crew neck. Semi-set in sleeves.  
Drawcord-free design.

Fabrication: 52% Airlume combed and ring-spun cotton,  
48% polyester fleece, 32 singles, 8.0oz.

Sizing: S-2XL



Athletic  
Heather



Black



Heather  
Blue Lagoon



Heather  
Mustard



Mauve

**7519  
WOMEN'S CLASSIC PULLOVER HOODIE**

Sustainably Produced.

Meet the new classic the women's classic pullover hoodie. With semi set-in sleeves, a fresh, drawcord-free design and a versatile, mid-length silhouette, this upgraded essential is perfect for solo wear or layering under jackets in colder weather, thanks to a slim fit and ultra-soft, warm sponge fleece.

Features: Mid-length. Slim fit. Semi-set in sleeves.  
Drawcord-free design.

Fabrication: 52% Airlume combed and ring-spun cotton,  
48% polyester fleece, 32 singles, 8.0oz.

Sizing: S-2XL



Athletic  
Heather



Black



Dark  
Lavender



Military  
Green



Vintage  
White

**BELLA + CANVAS.**





ON THIS PAGE (LEFT TO RIGHT):  
BELLA + CANVAS 7519 in Vintage White;  
and 7519 in Dark Lavender





ON THIS PAGE:  
BELLA + CANVAS 6400 in Dark Lavender



## CLASSIC, FEMININE, FOREVER

Part of our relaxed collection, this women's jersey T-shirt features a crew neck, short sleeves and a contemporary, looser fit for effortless style. Made from our super-soft 100% airlume cotton, this t-shirt feels amazing all day long. Plus, this garment's super-smooth surface makes it DTG ready for all those bold and beautiful prints that send a big message.

### 6400 WOMEN'S RELAXED SHORT SLEEVED TEE

Sustainably Produced.

Features: Side-seamed. Relaxed fit. Crew neck. Short sleeves. Tear away label.

Fabrication: Solid Colors: 100% Airlume combed and ring-spun cotton, 32 singles 4.2 oz

• \*Disclaimer: Due to the specialized washing process, each shirt is unique.

Sizing: S-3XL



Dark  
Lavender



Lavender  
Blue



Lavender  
Dust



Leaf



Mustard

AND  
MORE!



**BELLA + CANVAS.**





## PURPLE PASSION

ON THIS PAGE (LEFT TO RIGHT):  
BELLA + CANVAS 6400 in Dark Lavender;  
6400 in Lavender Dust;  
and 6400 in Lavender Blue





ON THIS PAGE:  
BELLA + CANVAS 6482 in Black



## CROP TOP: A CATEGORY OF IT'S OWN

A classic, tailored, and trendy tee, now cropped. Bella + Canvas cropped tee collection takes the go-to T-shirt silhouette and tweaks the details for a perfect fit. Different sizing allows for a relaxed fit, slim fit, or oversized fit.



### 6482 WOMEN'S JERSEY CROPPED TEE

Sustainably Produced.

Features: Side-seamed. Mid-length. Oversized sleeves. Neck binding. Relaxed body. Finished hem. Tear away label.

Fabrication: 100% Airlume combed and ring-spun cotton

Sizing: S-L



Black



Military Green



Mustard



Vintage White

**BELLA+CANVAS.**



ON THIS PAGE (LEFT TO RIGHT):  
 BELLA + CANVAS 6682 in Heather French Vanilla;  
 and BELLA + CANVAS 8882 in Heather Dust



**6682**  
**WOMEN'S RACERBACK CROP TANK**

Sustainably Produced.

Introducing the crop you've been waiting for. This women's racerback cropped tank top features a relaxed fit and comes in our heather fabrication. The modern, elongated armholes and the racerback with raw edge details make this tank a must-have.

Features: Side-seamed. Relaxed, cropped fit. Racerback. Raw edge arm holes.

Fabrication: 52% Airlume combed and ring-spun cotton, 48% poly jersey, 32 singles, 4.2 oz.  
 (Ath. Heather - 90% Airlume cotton and ring-spun cotton, 10% poly)

Sizing: S-2XL



**8882**  
**WOMEN'S FLOWY CROPPED TEE**

Sustainably Produced.

The flowy crop tee from our Fast Fashion collection shows off just the right amount. This modest-crop tee with inset sleeves creates an unforgettable silhouette that you will have to have in all colors.

Features: Side-seamed. Flowy Fit. Tailored Sleeve. Modest crop. Tear away label.

Fabrication: Solid Colors - 65% Poly 35% Viscose 32 singles 3.7 oz

• Athletic Heather - 90% Airlume combed and ringspun cotton, 10% Polyester

Sizing: S-2XL





ON THIS PAGE (LEFT TO RIGHT):  
GILDAN 18000 in Indigo;  
and GILDAN 18500 in Dark Chocolate



**GO GET THE GILDAN!**

With an array of styles, including 8 new additions, whatever you're looking for, you're sure to find in the Gildan line. Designed with decorators in mind, you can choose from an impressive pallet of 150 colors and many silhouettes so the only limit is your creative imagination. Offering affordable pricing, it is the perfect choice. Every time, all the time.

**18000  
HEAVY BLEND™ CREWNECK SWEATSHIRT**

Sustainably Produced.

Features: Conservative fit. 1x1 Rib with spandex. Air jet yarn. Satin label. Double-needle stitching at shoulders, armholes, neck, waistband and cuffs. Tear-away label.

Fabrication: 50% Cotton, 50% polyester, 8.0 oz.

Sizing: S-3XL



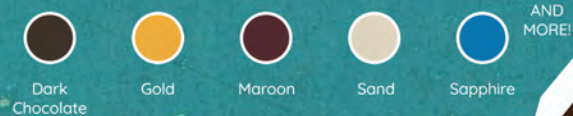
**18500  
HEAVY BLEND™ HOODED SWEATSHIRT**

Sustainably Produced.

Features: Conservative fit. 1x1 Rib with spandex. Air jet yarn. Double-lined hood with color-matched drawcord. Pouch pocket. Satin label. Double-needle stitching at shoulders, armholes, neck, waistband and cuffs. Tear-away label.

Fabrication: 50% Cotton, 50% polyester, 8.0 oz.

Sizing: S-5XL



**GILDAN**





ON THIS PAGE (LEFT TO RIGHT):  
GILDAN 18000 in Heather Sport Royal;  
18000 in Navy; and 18000 in Heather Sport  
Dark Navy





**DID YOU KNOW?  
GILDAN IS SUSTAINABLY PRODUCED.**

Find our more at  
[genuineresponsibility.com](http://genuineresponsibility.com)





ON THIS PAGE (LEFT TO RIGHT):  
GILDAN 64000 in Heather Orange;  
64000 in Heather Radiant Orchid;  
and 64000 Heather Royal



**64000**  
**SOFT STYLE**

Sustainably Produced.

Features: Shoulders rolled forward for a better fit. 5/8" Rib collar. Seamless double-needle collar. Quarter-turned to eliminate center crease. Preshrunk jersey knit fabric. Double-needle sleeve and bottom hems. Taped neck and shoulders. Tear-away label.

Fabrication: 100% Ring-spun cotton, 4.5 oz Softstyle®.

Sizing: XS-3XL



Heather Orange



Heather Radiant Orchid



Heather Royal



Jade Dome



Red

AND MORE!



ON THIS PAGE:  
GILDAN 2000 in Lime;  
and 2000 in Safety Pink

GILDAN®





**2000**  
**ULTRA COTTON® T-SHIRT**

Sustainably Produced.

Features: Conservative fit. Heavyweight fabric. Seamless double-needle collar, sleeves, and bottom hems. Satin, tear-away label. Taped neck and shoulders.

Fabrication: 100% Cotton (Ash and Sport Gray: 90% cotton, 10% polyester; Safety and Heathers: 50% cotton, 50% polyester) 6.0 oz.

Sizing: S-5XL



**64200**  
**ADULT SOFT-STYLE TANK TOP**

Sustainably Produced.

Features: 6.5 cm straps. Rib knit trim applied to neckline and armholes. Twin-needle bottom hem. Preshrunk jersey knit fabric. Tear-away label.

Sizing: S-2XL



**ON THIS PAGE (LEFT TO RIGHT):**  
GILDAN 64200 in White;  
64200 in Red; and 64200 in Navy



ON THIS PAGE:  
Next Level Apparel 3600 in Forest Green



WHAT'S NOW.  
WHAT'S NEXT: NLA



## WHAT'S NOW. WHAT'S NEXT.

From our local roots in Southern California to our international partners, we are dedicated to designing quality apparel that supports our customers' missions and thrives on taking customer success stories to the **Next Level**.



THE FABRIC OF YOUR PRINTING  
LIFE: RING SPUN COTTON

3600  
PREMIUM FITTED CREW

Meet our ultimate classic tee. Inspired by the casual-cool vibe from California, its design offers a retail fit. Our vision is to create a tee for everyone and every industry in soft, premium 100% combed ring-spun cotton.

Features: Self 3/8" shoulder to shoulder binding.  
Set-in collar of 1x1 Baby Rib. Crew neck. Fashion fit.  
Tear-away label.

Fabrication: 100% combed cotton jersey, 32 singles, 4.3 oz.

Sizing: S-4XL



Desert  
Pink



Forest  
Green



Purple  
Rush



Sand



Tahiti  
Blue

AND  
MORE!







ON THIS PAGE (LEFT TO RIGHT):  
Next Level Apparel 3600 in Forest Green;  
3600 in Sand; and 3600 in Desert Pink



**ON THIS PAGE:**  
Next Level Apparel 3601 in Cool Blue

**3601  
PREMIUM FITTED LONG SLEEVED CREW**

Made from our soft, premium 100% combed ring-spun cotton. It's lightweight for great mobility. Get a classic everyday look with elevated comfort.

Features: Self 3/8" shoulder to shoulder binding. Set-in collar of 1x1 Baby Rib. Crew neck. Fashion fit. Tear-away label.

Fabrication: 100% combed and ring-spun cotton, 32 singles, 4.3 oz.

Sizing: S-2XL



Black



Cardinal



Cool Blue



Heather  
Gray



Military  
Green

AND  
MORE!





ON THIS PAGE:  
Next Level Apparel 6210 in Mint



**CVC ORIGINAL  
FAVORITE**

## THE ORIGINAL CVC

Big on Value. Easy on the Eyes.

Offering the industry's favorite collection from the original creator of the CVC fabric, with a beautiful soft blend of consistent heathered cotton / polyester. The durability of this collection makes it perfect for screen printing and heat transfer.



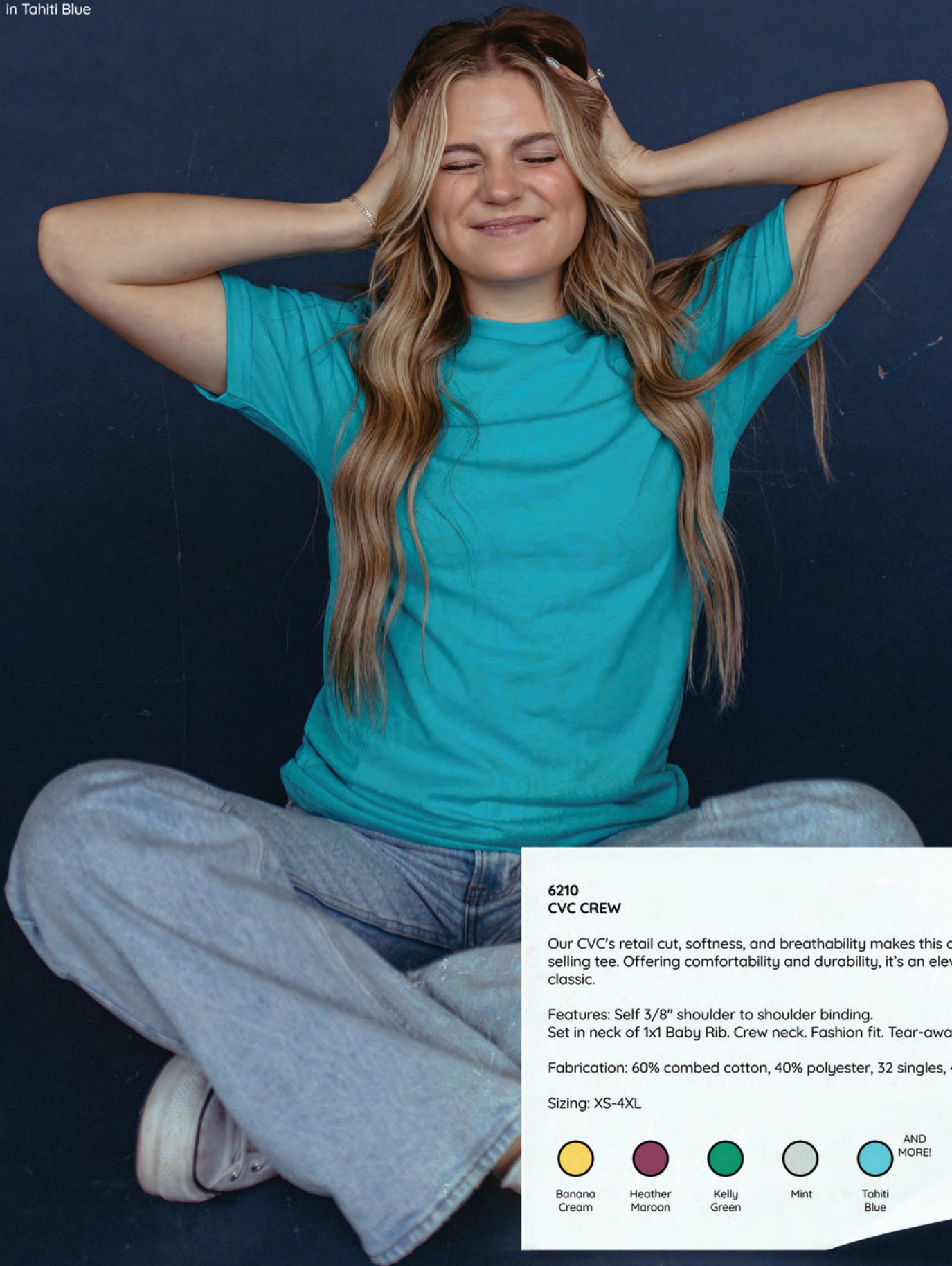


ON THIS PAGE (LEFT TO RIGHT):  
Next Level Apparel 6210 in Mint;  
6210 in Banana Cream; and 6210 in Tahiti Blue





ON THIS PAGE:  
Next Level Apparel 6210  
in Tahiti Blue



**6210  
CVC CREW**

Our CVC's retail cut, softness, and breathability makes this our #1 selling tee. Offering comfortability and durability, it's an elevated classic.

Features: Self 3/8" shoulder to shoulder binding.  
Set in neck of 1x1 Baby Rib. Crew neck. Fashion fit. Tear-away label.

Fabrication: 60% combed cotton, 40% polyester, 32 singles, 4.3 oz.

Sizing: XS-4XL



Banana  
Cream



Heather  
Maroon



Kelly  
Green



Mint



Tahiti  
Blue

AND  
MORE!



ON THIS PAGE:  
Next Level Apparel 6211 in Midnight Navy;  
6211 in Military Green; and 6211 in Indigo



**NLA** | **NEXT LEVEL**  
APPAREL



**6211**  
**UNISEX CVC LONG SLEEVED TEE**

Features: Set in neck of 1x1 Baby Rib. Crew neck.  
Fashion fit. Tear-away label.

Fabrication: 60% combed cotton, 40% polyester,  
32 singles, 4.3 oz.

Sizing: S-3XL



**ON THIS PAGE (LEFT TO RIGHT):**  
Next Level Apparel 6211 in Indigo;  
and 6211 in Heather Columbia Blue



ON THIS PAGE:  
Next Level Apparel 6600 in Heather Mauve



**NEW YEAR,  
NEW STYLE!**

**A relaxed ladies classic  
with updated sizing.**

**6600  
WOMEN'S CVC RELAXED TEE**

Thoughtfully designed for those who want a more relaxed fit than our popular 6610 cut, while still offering gentle contouring for a feminine fit. The 6600 offers side seams and 3/8 shoulder-to-shoulder self binding for shape retention.

Features: 1x1 baby ribbed collar. Crew neck. Relaxed fit. Side seams. Tear-away label.

Fabrication: 60% combed cotton, 40% polyester, 32 singles, 4.3 oz.

Sizing: XS-2XL



Antique Gold



Charcoal



Heather Columbia Blue

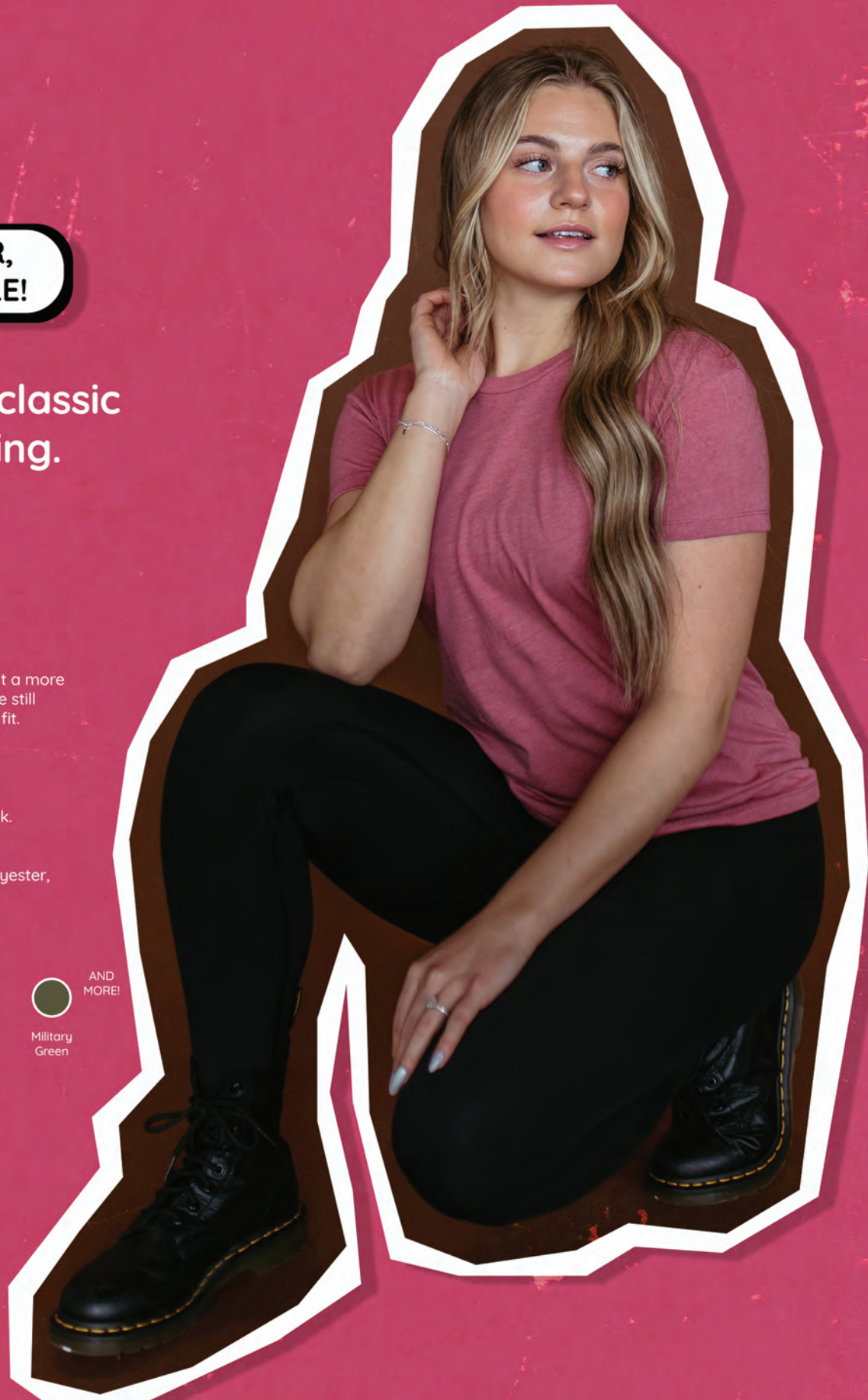


Heather Mauve



Military Green

AND MORE!





ON THIS PAGE (LEFT TO RIGHT):  
Next Level Apparel 6600 in Heather Columbia Blue;  
6600 in Heather\_Mauve; and 6600 in Military Green





ON THIS PAGE:  
Next Level Apparel 6200 in Sage



**FESTIVAL:  
IT'S A VIBE!**

**Festival, simply sublime  
and oh so silky.**

Inspired by the art and music festivals of Coachella Valley, California, with the sun-kissed colors of the valley's flora and flowing fabric that dances in the warm desert breezes. NLA's Festival Collection is the sublimation printer's dream with its lightweight, super silky fabric that doesn't skimp on durability. It's the preferred fabric choice and inspiration for sublimation and screen printing.





ON THIS PAGE (LEFT TO RIGHT):  
Next Level Apparel 6200 in Sage;  
and 6200 in Shiraz



**6200**  
**MEN'S POLY COTTON TEE**

Includes a set-in collar for more printing space. It's an incredibly lightweight fabric and versatile closet staple.

Features: Self 3/8" shoulder to shoulder binding. Crew neck. Fashion fit. Satin label.

Fabrication: 65% polyester, 35% combed and ring-spun cotton, 40 singles, 3.7 oz.

Sizing: XS-3XL





ON THIS PAGE (LEFT TO RIGHT):  
Next Level Apparel 5033 in Smoked Paprika;  
and 5033 in Antique Gold



**NLA** | NEXT LEVEL  
APPAREL



ON THIS PAGE (LEFT TO RIGHT):  
Next Level Apparel 5033 in Shiraz;  
and 5033 in Stonewash Denim



**5033  
WOMEN'S FESTIVAL TANK**

Explore all the possibilities with our festival tank featuring a scoop neckline, wide scalloped hem, and drape for a relaxed look. Soft and lightweight fabric for the festival go-getter and the restless free-spirited.

Features: Deep scoop neckline. Curved hem. Hemmed neck and armhole. Feminine drape. Side slit and seamed. Fashion fit. Satin, tear-away label.

Fabrication: 65% Poly / 35% Combed Ring-Spun Cotton

Sizing: XS-2XL



Antique Gold



Ash



Smoked Paprika



Stonewash Denim



Stonewash Green

AND MORE!



ON THIS PAGE (LEFT TO RIGHT):  
Next Level Apparel 5080 in Royal Pine



**NLA** | **NEXT LEVEL**  
APPAREL®





**5080**  
**WOMEN'S FESTIVAL CALI CROP**

Features: Self 3/8" shoulder to shoulder binding. 1x1 baby rib. Relaxed crew neckline. Raw edge sleeve and hem. Cropped body with Relaxed fit. Side seamed. Tear-away label.

Fabrication: 65% Polyester 35% Combed Ring-Spun Cotton, 40 Singles, 3.5 oz

Sizing: XS-2XL



Antique Denim



Antique Gold



Desert Pink



Royal Pine



Stonewash Denim

AND MORE!

**ON THIS PAGE (LEFT TO RIGHT):**  
Next Level Apparel 5080 in Stonewash Denim; and 5080 in Desert Pink



ON THIS PAGE:

Next Level Apparel 5083 in Smoked Paprika



**5083**  
**WOMEN'S FESTIVAL CROP TANK**

Introducing the 5083 festival cropped tank, an easy transition piece from layering to "fun and games." This piece features a modest crop length and set in collar as well as self-binding fabric around the neck and arm holes. The soft, lightweight, flowy fabric is perfect for free-spirited movement.

Features: Self-fabric binding around the neck and arm holes. Soft lightweight, flowing fabric. Scoop neck. Modest crop length, Clean, relaxed look. Classic fit.

Fabrication: 65% polyester, 35% combed ring-spun cotton, 40 singles, 3.5 oz

Sizing: XS-2XL



Antique Gold



Charcoal



Heather Gray



Smoked Paprika



White

AND MORE!







ON THIS PAGE (LEFT TO RIGHT):  
Next Level Apparel 5083 in Stonewash Denim;  
5083 in Smoked Paprika; and 5083 in Desert Pink



ON THIS PAGE (LEFT TO RIGHT):  
Next Level Apparel 9000 in Midnight Navy;  
Next Level Apparel 9643  
in Heather Gray; and 9000 in White





**9000**  
**UNISEX RAGLAN CREW - LAGUNA COLLECTION**

Comfortable pullover crew with French Terry body inspired by surf and skate culture.

Features: Self 3/8" Back Neck Binding. Crew Neck. Raglan sleeve. 1x1 ribbing at collar, waistband and cuffs. Unisex fit. Tear-away label.

Fabrication: 60% Combed Ring-Spun Cotton, 40% Polyester French Terry Fleece

Sizing: XS-3XL



Cardinal



Cool Blue



Midnight Navy



Military Green



White

**9643**  
**UNISEX FLEECE QUARTER ZIP**

Your new favorite pullover. 100% cotton-faced quarter zip. Premium, luxurious look to a versatile casual piece.

Features: Color matched quarter zip. Ribbed cuffs and waistband. Turtle neck collar. Classic fit.

Fabrication: 80% Cotton, 20% Polyester.  
100% Cotton Face Brushed Back Fleece.  
(Heather Gray - 60% Cotton/40% Polyester Fleece)

Sizing: XS-3XL



Black



Heather Gray



Midnight Navy

**ON THIS PAGE:**

Next Level Apparel 9643 in Heather Gray





**ON THIS PAGE:**

Independent Trading Co. AFX64CRP in Black Camo;  
and Independent Trading Co. PRM20PNT in Black



**NOW YOU SEE ME,  
NOW YOU DON'T**

**AFX64CRP  
WOMEN'S CROPPED PULLOVER HOOD**

Features: Split stitch double needle sewing on all seams. Ladies fit. 3/8" flat drawcord. Twill neck tape. 1x1 ribbing at cuffs. Sewn eyelets. Tear-away label.

Fabrication: 80% cotton, 20% polyester blend fleece, 6.5 oz (210 gm) pre-laundered cotton/polyester blend fleece, ring spun cotton

- Solid Colors, Camo, & Tie Dye: 80% Cotton/20% Polyester with 100% cotton 40 singles face yarn for supreme printability and softness
- Heather Colors: 52% Cotton/48% Polyester
- Camo Colors: 80% Cotton/20% Polyester with 100% cotton 40 singles face yarn with water based camouflage print

Sizing: XS-2XL



Black  
Camo



Blush



Bone



Sage



Tie Dye  
Cotton Candy

AND  
MORE!

**PRM20PNT  
WOMEN'S CALIFORNIA WAVE WASH SWEATPANT**

Our PRM20PNT women's California wave wash pant is super soft, casual, and extremely comfortable. The unique fabric is garment washed to bring you a one of a kind look, feel, and color tone.

Features: Blind stitch + coverstitch sewing. Elastic waistband with shoestring drawcord. 1x1 ribbing at ankle cuffs. Sewn eyelets. Jersey lined hand pockets. Standard fit.

Fabrication: 55% ring spun cotton/45% polyester blend, 3-end fleece, 7.0 oz. Wave Wash Garment Wash for softness and unique color.

Sizing: XS-2XL



Bone



Dusty  
Rose



Forest  
Camo



Misty  
Blue



Shadow

AND  
MORE!



**INDEPENDENT**  
TRADING COMPANY







**ON THIS PAGE:**  
Independent Trading Co. PRM2000 in Bone;  
and Independent Trading Co. PRM20SRT in Forest Camo

**PRM2000**  
**WOMEN'S CALIFORNIA WAVE WASH CREW**

Features: Raglan sleeves. Blind stitch + coverstitch sewing.  
Twill neck tape. Standard fit.

Fabrication: 7.0 oz (230 gm) 52% cotton/48% polyester blend  
3-end fleece

Sizing: XS-2XL



Bone



Dusty  
Rose



Misty  
Blue



Sage



Shadow

AND  
MORE!

**PRM20SRT**  
**WOMEN'S CALIFORNIA WAVE WASH SWEATSHORT**

Features: Blind stitch + coverstitch sewing. Elastic waistband  
with shoestring drawcord. Sewn eyelets. Jersey lined hand  
pockets. Standard fit.

Fabrication: 7.0 oz (230 gm) 52% ring spun cotton/48%  
polyester blend 3-end fleece, 3-end fleece

Sizing: XS-2XL



Black  
Camo



Dusty  
Rose



Forest  
Camo



Misty  
Blue



Sage

AND  
MORE!



ON THIS PAGE (LEFT TO RIGHT):  
Independent Trading Co. EXP50F in Charcoal Heather Black;  
EXP50F in Olive Black; and EXP50F in Red Black



## FANCY FLANNELS

### EXP50F UNISEX FLANNEL SHIRT

This flannel is super soft with a durable & substantial feel and is easily decorated with screen prints, patches, or labels.

Features: Button closure. Double front pockets with top flap opening. Rollup sleeve vents. Tear-away label.

Fabrication: 7.1 oz, 60% Cotton / 40% Polyester blend flannel

Sizing: XS-3XL



Charcoal  
Heather  
Black



Grey  
Heather  
Black



Olive  
Black



Red  
Black







## THE SOFTER SIDE OF INDEPENDENT TRADING CO.

### PRM2500 CALIFORNIA WAVE WASH HOODIE

Features: Garment Wash for softness and unique color. Raglan sleeves. Blind stitch + coverstitch sewing. Sewn eyelets. Twill neck tape. Standard fit.

Fabrication: 7.0 oz (230 gm) 52% ring spun cotton/48% polyester blend 3-end fleece

Sizing: XS-2XL



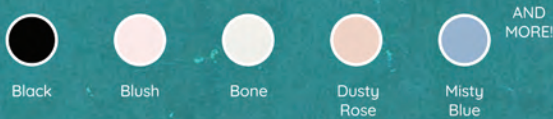
### PRM2500Z WOMEN'S CALIFORNIA WAVE WASH ZIP HOOD

The beautiful color palette, modern silhouette, and soft hand feel makes this style a standout at retail.

Features: Raglan sleeves. Blind stitch + Coverstitch sewing. Sewn eyelets. Twill neck tap. Antique nickel zipper. Standard fit.

Fabrication: 7.0 oz (230 gm) 52% cotton/48% polyester blend 3-end fleece, ring spun cotton

Sizing: XS-2XL



ON THIS PAGE (LEFT TO RIGHT):  
Independent Trading Co. PRM2500 in Bone;  
ITC PRM20SRT in Bone; ITC in PRM2500Z in Blush;  
and PRM20SRT in Blush





## PLUSH, SPONGE, SPECIAL

ON THIS PAGE (LEFT TO RIGHT):  
Independent Trading Co. PRM30SBC in Maroon;  
and PRM30SBC in Midnight

### PRM30SBC UNISEX SPECIAL BLEND RAGLAN CREW

One touch and you will be hooked on special blend fleece! Unmatched in softness, our unisex midweight special blend crew has a slim fit in a beautiful selection of colors.

Features: Reverse coverstitch sewing. Twill neck tape. 1x1 ribbing at neck, cuffs and waistband. Self fabric side panel inserts. Slim unisex fit. Tear-away label.

Fabrication: 8oz (270 gm) 52% cotton/48% polyester blend, ring spun cotton, 32 singles cotton/polyester blend face yarn

Sizing: XS-3XL



Classic Navy



Maroon



Midnight



Moss



Pomegranate

AND MORE!



**INDEPENDENT**  
TRADING COMPANY



**ON THIS PAGE (LEFT TO RIGHT):**

Independent Trading Co. PRM33SBP in Stone Heather;  
and Independent Trading Co. PRM20PNT in Black Camo

**PRM33SBP  
UNISEX SPECIAL BLEND RAGLAN HOODED PULLOVER**

Features: Reverse coverstitch sewing. Twill neck tape. 1x1 ribbing at neck, cuffs and waistband. Sewn eyelets. Self fabric side panel inserts. Slim unisex fit. Tear-away label.

Fabrication: 8oz (270 gm) 52% cotton/48% polyester blend, ring spun cotton, 32 singles cotton/polyester blend face yarn

Sizing: XS-3XL



Classic Navy



Crimson



Pacific



Sea Green



Stone Heather

AND MORE!







**DIRTY JOBS: WORK WEAR**





**ON THIS PAGE:**  
Independent Trading Co. EXP560V in Saddle;  
and Independent Trading Co. EXP50F in Grey  
Heather Black

**EXP550Z**  
**MEN'S INSULATED CANVAS WORKWEAR JACKET**

The EXP550Z is a classic workwear jacket... Built to last with a rugged 360gsm 100% cotton canvas shell with hyper-loft quilted insulation, 3 panel hood & heavy duty brass zippers.

Features: Hyper-Loft quilted insulation. 3 panel hood. Heavy duty brass zippers. 2x2 ribbing at cuffs & waistband. Concealed embroidery access. Tear-away label.

Fabrication: 360gm 100% cotton canvas shell

Sizing: XS-3XL



Black



Saddle

**EXP560V**  
**MEN'S INSULATED CANVAS WORKWEAR VEST**

Features: Hyper-Loft quilted insulation. Heavy duty brass snaps. 2x2 ribbing at collar. Concealed embroidery access. Tear-away neck label.

Fabrication: 360gm 100% cotton canvas shell

Sizing: XS-3XL



Black



Saddle





ON THIS PAGE (LEFT TO RIGHT):  
Independent Trading Co. EXP120PFV in Black;  
ITC EXP50F in Red Black; ITC EXP100PFZ in Black;  
and ITC PRM33SBP in Stone Heather



 **INDEPENDENT**  
TRADING COMPANY



**ON THIS PAGE:**

Independent Trading Co. EXP120PFV in Black;  
and Independent Trading Co. IND4000 in Dusty Pink

**EXP100PFZ  
MEN'S HYPER-LOFT PUFFY JACKET**

Our EXP100PFZ hyper-loft puffy jacket has plush warmth for all seasons.

Features: #5 reverse coil zippers at chest and pockets. Packable pocket with #3 reverse coil zipper. Capped elastic sleeve cuff. Locker loop at wearers back neck. Bungee toggle at wearers right side waist. Chest pocket for concealed embroidery access. Tear-away neck label.

Fabrication: water & wind resistant 100% Nylon Exterior Shell, 60 gm Hyper-Loft poly fill insulation, 100% polyester lining

Sizing: XS-3XL



Black

**EXP120PFV  
MEN'S HYPER-LOFT PUFFY VEST**

Features: #5 reverse coil zippers at chest and pockets. Packable pocket with #3 reverse coil zipper. Capped elastic armhole binding. Locker loop at wearers back neck. Bungee toggle at wearers right side waist. Chest pocket for concealed embroidery access. Tear-away neck label.

Fabrication: water & wind resistant 100% nylon exterior shell, 60 gm Hyper-Loft poly fill insulation, 100% polyester lining

Sizing: XS-3XL



Black





ON THIS PAGE (LEFT TO RIGHT):  
Independent Trading Co. SS4500 in Red;  
and Independent Trading Co. IND20PNT in Red



## SET YOUR HEART OUT!

### SS4500 MIDWEIGHT PULLOVER HOODED SWEATSHIRT

Our SS4500 basic men's pullover hooded sweatshirt is made with soft, mid weight fleece and generous fit for comfort.

Features: Jersey lined hood. Split stitch double needle sewing on all seams. Twill neck tape. 1x1 ribbing at cuffs & waistband. Metal eyelets. Standard fit. Tear-away neck label.

Fabrication: 8.5 oz (280 gm) cotton/polyester blend fleece, 20 single, 8.5 oz.

- Solid Colors, Camo Colors & Gunmetal Heather: 80% Cotton/20% Polyester with 100% cotton 20 singles face yarn for supreme print ability and softness
- Grey Heather: 75% Cotton/25% Polyester
- All other Heather Colors & Safety Colors: 55% Cotton/45% Polyester

Sizing: XS-5XL



Mint



Red



Royal  
Heather



Saddle



Orange

AND  
MORE!

### IND20PNT MEN'S MIDWEIGHT FLEECE PANT

Features: Elastic waistband with shoestring drawcord. 1x1 ribbing at ankle cuffs. Sewn eyelets. Sewn fly detail. Back pocket & Jersey lined hand pockets. Relaxed fit.

Fabrication: 8.5 oz. (280gm) cotton/polyester blend fleece with 32 Singles face yarn, ring spun cotton

- Solid Colors & Camo: 80% Cotton/20% Polyester with 100% Cotton Face Yarn.
- Grey Heather: 52% Cotton/48% Polyester

Sizing: XS-2XL



Lavender



Light  
Yellow



Red



Royal



Sandstone

AND  
MORE!





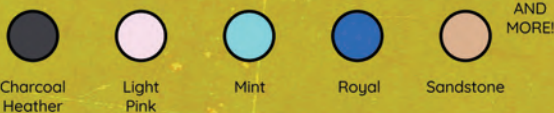
**IND4000Z**  
**FULL ZIP HOODED SWEATSHIRT**

Features: Fleece lined hood. Split stitch double-needle sewing on all seams. Matching twill neck tape. 1x1 ribbing at cuffs and waistband. Nickel eyelets. #5 nickel kissing zipper. Conservative fit.

Fabrication: 10 oz (330 gm) cotton/polyester blend fleece, ring spun cotton

- Solid Colors: 70% Cotton/30% Polyester with 100% Cotton 32 singles face yarn for supreme printability and softness
- Heather Colors: 52% Cotton/48% Polyester
- Camo Colors: 75% Cotton/25% Polyester with 100% cotton 32 singles face yarn

Sizing: XS-6XL



**IND20SRT**  
**MEN'S MIDWEIGHT FLEECE SHORT**

Features: Elastic waistband with shoestring drawcord. Sewn eyelets. Sewn fly detail. back pocket & Jersey lined hand pockets. Relaxed fit with tapered knee opening.

Fabrication: 8.5 oz. (280gm) cotton/polyester blend fleece with 32 Singles face yarn, ring spun cotton

- Solid Colors & Camo: 80% Cotton/20% Polyester with 100% Cotton Face Yarn.
- Grey Heather: 52% Cotton/48% Polyester

Sizing: XS-2XL



**ON THIS PAGE:**

Independent Trading Co. IND4000Z in Charcoal Heather; and Independent Trading Co. IND20SRT in Royal







**CROSS GRAIN LEGENDS  
BEAUTY AND THE BRAUN**

ON THIS PAGE:  
Independent Trading Co. IND5000P in Royal





**IND5000P**  
**LEGEND MEN'S HEAVYWEIGHT CROSS-GRAIN PULLOVER HOOD**

Features: Double fleece lined hood. Antique silver eyelets. Heavy duty 100% cotton shoestring drawcord with antique silver tips. Double ribbing side panels for stretch. Reverse coverstitch sewing on all seams for durability and a premium finish. Body and hood panels sewn cross-grain to limit shrinkage & shortening after wash. 520gm 100% cotton 1x1 ribbing at cuff and waistband. Retail fit. Tear-away woven neck label.

Fabrication: Premium Heavyweight  
13.5oz/450gm 3-end fleece, ring spun  
cotton

- Solid Colors & Grey Heather:  
70% Cotton / 30% Polyester with 100%  
cotton 21 singles face yarn for supreme  
printability and softness
- Charcoal Heather: 60% cotton / 40%  
polyester with cotton/polyester blend  
face yarn

Sizing: XS-3XL



Alpine  
Green



Bone



Classic  
Navy



Gold



Royal

AND  
MORE!



**ON THIS PAGE:**  
Independent Trading Co. IND5000P in Gold



**PRM4500  
UNISEX MIDWEIGHT PIGMENT DYED HOODED  
PULLOVER**

Our unisex midweight pigment dyed hooded pullover has an individual and unique vintage character we accomplish during our full garment dyeing process. Made with ultra soft cotton/polyester blend fleece in an assortment of amazing colors, these garments are as comfortable as they are eye-catching.

Features: Jersey lined hood. Split stitch double needle sewing on all seams. Twill neck tape. 1x1 ribbing at cuffs and waistband. Sewn eyelets. Standard fit.

Fabrication: 9oz (300 gm) 80% cotton/20% polyester blend, ring spun cotton, 100% cotton 30 singles face yarn

Sizing: XS-3XL



**PRM50STPD  
MEN'S PIGMENT DYED FLEECE SHORT**

Features: Elastic waistband with flat drawcord. Sewn eyelets. Sewn fly detail. Back pocket & Jersey lined hand pockets. Relaxed fit with tapered knee opening.

Fabrication: 9oz (300 gm) 80% cotton/20% polyester blend, ring spun cotton, 100% cotton 30 singles face yarn

Sizing: XS-2XL



**ON THIS PAGE (LEFT TO RIGHT):**  
Independent Trading Co. PRM4500 in Pigment Maroon;  
ITC PRM50STPD in Pigment Sandstone; PRM4500  
in Pigment Slate Blue; and PRM50STPD in Pigment Maroon





ON THIS PAGE (LEFT TO RIGHT):  
Independent Trading Co. AFX64CRP in Blush;  
ITC PRM50PTPD in Pigment Mint;  
and ITC PRM3500 in Pigment Cement



**PRM50PTPD  
MEN'S PIGMENT DYED FLEECE PANT**

Features: Elastic waistband with flat drawcord. 1x1 ribbing at ankle cuffs. Sewn eyelets. Sewn fly detail. Back pocket & Jersey lined hand pockets. Relaxed fit.

Fabrication: 9oz (300 gm) 80% cotton/20% polyester blend, ring spun cotton, 100% cotton 30 singles face yarn

Sizing: XS-2XL

-  Pigment Black
  -  Pigment Light Blue
  -  Pigment Mint
  -  Pigment Pink
  -  Pigment Sandstone
- AND MORE!

**PRM3500  
UNISEX MIDWEIGHT PIGMENT DYED CREW**

Features: Split stitch double needle sewing on all seams. Twill neck tape. 1x1 ribbing at neck, cuffs and waistband. Standard fit.

Fabrication: 9oz (300 gm) 80% cotton/20% polyester blend, ring spun cotton, 100% cotton 30 singles face yarn

Sizing: XS-3XL

-  Pigment Amber
  -  Pigment Cement
  -  Pigment Plum
  -  Pigment Sage
  -  Pigment Yellow
- AND MORE!







**A NEW COLOR PALETTE  
WITH A 10 OZ CLASSIC**

ON THIS PAGE (LEFT TO RIGHT):  
Independent Trading Co. IND4000 in Dusty Sage;  
IND4000 in Plum; IND4000 in Storm Blue;  
and IND4000 in Saddle



**IND4000  
HOODED SWEATSHIRT**

The original independent sweatshirt, the IND4000, is the go-to blank sweatshirt for brands all over the world. Why? It's our combination of quality fabric, construction, colors, printability, and a consistency in production that has been forged from over 30 years of manufacturing this classic style.

Features: Fleece lined hood. Split stitch double needle sewing on all seams. Twill neck tape. Nickel eyelets. 100% cotton round braided drawcord. 1x1 ribbing at cuffs and waistband. Generous fit. Tear-away neck label.

Fabrication: 10 oz (330 gm) cotton/polyester blend 3-end fleece, ring spun cotton

- Solid Colors & Houndstooth: 70% Cotton/30% Polyester with 100% cotton 32 singles face yarn for supreme printability and softness
- Heather Colors: 52% Cotton/48% Polyester
- Camo Colors: 75% Cotton/25% Polyester with 100% cotton 32 singles face yarn
- Safety Colors: 52% Cotton/48% Polyester overall fabric content with 65% Polyester/35% Cotton face yarns

Sizing: XS-5XL



Dusty Pink



Dusty Sage



Plum



Saddle



Storm Blue

AND MORE!



**ON THIS PAGE:**  
Independent Trading Co. IND4000 in Storm Blue



ON THIS PAGE (LEFT TO RIGHT):  
Independent Trading Co. SS1000C in Rose;  
and SS1000C in Sand



## LOOPY LOO / LIGHTWEIGHT TERRY CREW



### SS1000C UNISEX LIGHTWEIGHT LOOPBACK TERRY CREW

Beautifully designed with a modern color palette, our SS1000C unisex lightweight loopback terry crew is unique to the wholesale market with a premium look and feel that you will love to wear.

Features: Twill neck tape. 1x1 ribbing at cuffs & waistband. Unisex fit. Tear-away neck label.

Fabrication: 7.5oz (250 gm)  
55% cotton/45% polyester fabric,  
loopback terry fabric, 20 Singles face yarn

Sizing: XS-3XL



Black



Charcoal  
Heather



Indigo



Rose



White

AND  
MORE!





ON THIS PAGE (LEFT TO RIGHT):  
Independent Trading Co. SS1000 in Harvest Gold;  
and SS1000 in Misty Blue

**SS1000**  
**UNISEX LIGHTWEIGHT LOOPBACK TERRY HOODED PULLOVER**

Features: Antique silver eyelets. Double shoelace drawcords with antique silver metal tips. Twill neck tape. 1x1 ribbing at cuffs & waistband. Unisex fit. Tear-away neck label.

Fabrication: 7.5oz (250 gm) 55% cotton/45% polyester fabric, loopback terry fabric, 20 Singles face yarn

Sizing: XS-3XL



Harvest Gold



Misty Blue



Olive



Port



Sand

AND MORE!







**BOLD, BRIGHT AND BASIC**

ON THIS PAGE (LEFT TO RIGHT):  
Independent Trading Co. SS4500 in Safety Orange;  
SS4500 in Neon Pink; and SS4500 in Safety Yellow







## FULL CREW

ON THIS PAGE (LEFT TO RIGHT):  
Independent Trading Co. SS3000  
in Lavender; and SS3000 in Bone



### SS3000 UNISEX MIDWEIGHT CREW

Our SS3000 crewneck sweatshirt is made with midweight fabric, generous spec and quality construction. The SS3000 standard supply crew is a timeless design now available in popular colors.

Features: Split stitch double needle sewing on all seams. Twill neck tape. 1x1 ribbing at collar, cuffs and waistband. Standard fit. Tear-away neck label.

Fabrication: 8.5 oz (280 gm) cotton/polyester blend fleece

- Solid Colors, Camo Colors & Gunmetal Heather: 80% Cotton/20% Polyester with 100% cotton 20 singles face yarn for supreme print ability and softness
- Grey Heather: 75% Cotton/25% Polyester
- All other Heather Colors: 55% Cotton/45% Polyester

Sizing: XS-5XL



Bone



Dark Green



Lavender



Mint



Red

AND MORE!





## STREET SCENE

ON THIS PAGE (LEFT TO RIGHT):  
Shaka Wear SHALS in Burgundy;  
and SHALS in Khaki

# The New and Improved Streetwear Essentials



**SHAKA WEAR**  
STREETWEAR ESSENTIALS



ON THIS PAGE:  
Shaka Wear SHGD in Midnight Navy

**SHALS**  
**ADULT ACTIVE LONG SLEEVE TEE**

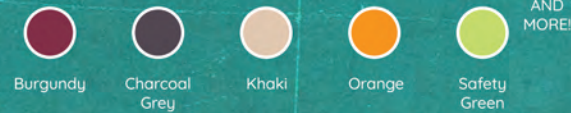
This long sleeve is the go-to screenprinting item for those with an active lifestyle and offers the look and feel you are familiar with.

Features: 1" neck ribbing. Tear-away label. Superior quality. Classic fit. Densely knit. Screen printer's favorite tee.

Fabrication: 6.0 oz, 18 singles 100% USA soft spun cotton

- Heather Grey: 90% USA soft spun cotton/10% polyester
- Charcoal Grey: 50% USA soft spun cotton/50% polyester
- Safety Green: 50% USA soft spun cotton/50% polyester

Sizing: S-5XL



## Garment Dye Tees are nothing to play with

**SHGD**  
**GARMENT DYE SHORT SLEEVE TEE**

Features: Densely knit for clean printing. Reinforced seams. Oversized fit.

Fabrication: 7.5 oz., 100% USA Cotton, 16 singles, Garment dyed for retro-vintage look

Sizing: XS-5XL





## Max heavyweight tees, washed and shrink free.

**SHHTDS**  
ADULT 7.5 MAX HEAVYWEIGHT TIE DYE SHORT SLEEVED TEE

The first heavyweight street essential- Los Angeles inspired tie dye. By adding lycra in the ribbing and making it a heavyweight and oversized fit, we bring you the highest quality tie dye with a streetwear twist.

Features: Retro look. 3.5% lycra mock neck ribbing. Heavy knitting. Slight oversized fit.

Fabrication: 7.5 oz., 100% USA cotton

Sizing: S-3XL





ON THIS PAGE (LEFT TO RIGHT):  
Shaka Wear SHTHRM in White;  
and SHTHRM in Black



**SHTHRM  
ADULT THERMAL**

This heavyweight waffle knit thermal is made extra thick to keep you warm during those outdoor, or indoor, activities.

Features: Heavyweight waffle knit. Shoulder-to-shoulder neck tape. 1" double-needle stitched bottom hem. 1" neck ribbing. Ribbed wrist cuffs. Forward-thrusted shoulder seam. Woven neck and side-seam labels.

Fabrication: 9.0 oz., 100% USA cotton, 18 singles

- Heather Grey: 90% USA cotton/10% polyester
- Charcoal Grey: 50% USA cotton/50% polyester

Sizing: S-5XL







THAT'S STREETWEAR!

**SHWJ  
WIND BREAKER JACKET**

Features: Color blocked. Hood with drawstring. Front zipper. Ribbing at cuff & bottom hem.

Fabrication:

- Shell: 100% polyester 3.0 oz; water-resistant
- Lining: 65% cotton/35% polyester 5.6 oz
- Rib: 100% polyester 19.2 oz

Sizing: S-3XL



Black



Black /  
Camo



Green  
Camo



Olive



White /  
Black

AND  
MORE!



**SHAKA WEAR**

STREETWEAR ESSENTIALS



ON THIS PAGE (LEFT TO RIGHT):  
Shaka Wear SHPJ in Black

**SHPJ  
PLAID JACKET**

This street style hooded plaid flannel jacket takes you back to the 90's

Features: Dual chest pockets with buttoned flaps.  
Double-buttoned adjustable sleeve cuffs.  
Folded outer collar. 7-button front closure.

**Fabrication:**

- Shell: 60% cotton / 40% polyester 4.6 oz
- Lining: 90% cotton / 10% polyester 5.0 oz
- Sleeve lining: 100% quilted polyester
- Single jersey hood: 90% cotton / 10% polyester

Sizing: S-5XL



Black



Dark  
Grey



Navy



Red





ON THIS PAGE (LEFT TO RIGHT):  
Shaka Wear SHBJ in Black

**SHBJ  
BOMBER JACKET**

Shaka Wear brings you the most up-to-date streetwear trend with our bomber jacket while staying true to the classic look and feel. Our bomber jacket is thick and durable while maintaining a comfortable fit with slightly bigger armholes. It is constructed with heavy duty cuffs and ribbing on the bottom of the jacket for maximum quality and a premium look and feel. Don't let the price fool you, this is not a cheap jacket; made for quality.

Features: Water resistant nylon shell. Diamond-stitched polyester lining. 3.1 oz shell / 5.3 oz lining. Stylish shirring sleeves. Tonal collar & sleeves. Inner pocket. High-quality zipper. Button-flap pockets. Heavy-knit ribbing.

Fabrication:

- Shell: 100% Nylon 3.1 oz
- Lining: 100% Polyester 5.3 oz

Sizing: S-3XL



Black



Blue



Burgundy



Olive



Purple



**SHAKA WEAR**  
STREETWEAR ESSENTIALS



ON THIS PAGE (LEFT TO RIGHT):  
Shaka Wear SHVBJ in Navy;  
and SHVBJ in Red



**SHVBJ  
VARSITY BOMBER JACKET**

Features: Features: Raglan sleeve for maximum mobility. Dye-to-match button on front. Striped design on ribbing (neck, cuff, & bottom)

Fabrication: 3.0 oz, water resistant 100% nylon shell, 1.8 oz, 100% polyester lining, 17.2 oz, 2x1 100% polyester rib

Sizing: S-3XL



Black



Navy



Red



Royal





## LOOK GOOD, FEEL GOOD

Decky is making their name known by striving to provide comfortable products that make you look good.

### 600 GI WATCH CAP

The GI watch cap is a cuffed, knit beanie designed for a snug fit. It features a braided knit style design.

Features: Cuffed knit beanie. Braided knit style design. Snug Fit.

Fabrication: 100% Acrylic

Fit: One size fits most



Burnt Orange



Cardinal



Khaki



Olive



Teal

AND MORE!



ON THIS PAGE (LEFT TO RIGHT):  
Decky 600 in Khaki; 600 in Heather Gray;  
and 600 in Black





ON THIS PAGE:  
Decky 528 in USA

528  
MAT STRAW LIFEGUARD HAT

The tough and durable lifeguard hat features a unique mat straw design and colored brim edge. Comes with a leather hatband.

Features: Colored brim. Durable. Polyester sweatband.

Fabrication: 100% Mat Straw

Fit: One size fits most



Natural



USA







**6032**  
**5 PANEL HIGH PROFILE**  
**COTTON/POLY BLEND ROPE HAT**

The classic rope cap is a soft-structured 5 panel cap featuring a flip-up buckram, braid at the base of the crown and a retro flat bill style.

Features: High profile, unstructured. Five Panel: Flat Visor. Adjustable plastic snap.

Fabrication: 50% cotton/50% polyester

Fit: One size fits most



Birch /  
Black



Burnt  
Orange /  
Black



Loden /  
Black



Peach /  
Maroon



White

AND  
MORE!

**ON THIS PAGE:**  
Decky 6032 in Peach / Maroon



ON THIS PAGE (LEFT TO RIGHT):

Decky 6032 in White; 6032 in Burnt Orange / Black;  
and 6032 in Loden / Black





ON THIS PAGE:  
Decky 1015 in White

**1015**  
**6 PANEL MID PROFILE**  
**ACRYLIC/POLYESTER SNAPBACK**

The curve bill baseball cap is a constructed 6-panel cap, with a pre-curved bill and a vintage plastic snapback closure.

Features: Mid profile, Structured, 6 Panel, Curved bill, Adjustable plastic snap.

Fabrication: 100% polyester

Fit: One size fits most



Gold



Navy



Red



Teal



White

AND  
MORE!





ON THIS PAGE (LEFT TO RIGHT):  
Decky 6021 in Charcoal / White

**6021  
MID PROFILE POLY/COTTON TRUCKER**

The classic trucker cap combines style, quality and comfort you've come to expect from Decky. It features stitched eyelets, a cotton sweatband and an adjustable plastic snapback closure for the perfect fit.

Features: Mid profile, Structured. Six Panel. Curved Visor. Adjustable plastic snap.

Fabrication: 50% cotton/50% polyester

Fit: One size fits most



Black Front /  
Gold Back



Brown /  
Khaki



Charcoal /  
White



Loden /  
Black



Teal /  
Black

AND  
MORE!





ON THIS PAGE (LEFT TO RIGHT):  
Decky 6021 in Loden / Black;  
6021 in Charcoal / White





ON THIS PAGE:  
Decky 1098 in Black



**1098**  
**7 PANEL COTTON SNAPBACK**

The 7-panel snapback is a structured cap featuring an integrated cotton sweatband, retro flat bill, and stitched eyelets. It's finished off with a plastic snapback closure.

Features: High profile, Structured. 7 Panel. Flat bill. Adjustable plastic snap.

Fabrication: 100% cotton

Fit: One size fits most



Black



Charcoal



White



## Bella + Canvas

1002.....	2
1081.....	3
3001.....	4, 5
3001CVC.....	8
3480.....	6
3501.....	9
3501CVC.....	7
3719.....	10, 11
3739.....	10, 12
3901.....	7
3945.....	13
6400.....	20, 21
6482.....	22
6682.....	23
7502.....	14
7505.....	15, 17
7506.....	16, 17
7511.....	18
7519.....	19
7539.....	16, 17
8882.....	23

## Decky

528.....	29, 81
600.....	52, 80
1015.....	22, 84
1098.....	87
6021.....	85, 86
6032.....	82, 83

## Gildan

2000.....	28
18000.....	24, 25
18500.....	24, 26
64000.....	27
64200.....	29, 81

## Independent Trading Co.

AFX64CRP.....	50, 65
EXP100PFZ.....	58
EXP120PFV.....	58, 59, 83
EXP50F.....	52, 57, 58, 80, 83
EXP550Z.....	56, 83
EXP560V.....	57, 83
IND20PNT.....	60
IND20SRT.....	61
IND4000.....	56, 59, 66, 67, 82, 83
IND4000Z.....	61
IND5000P.....	62, 63, 87
PRM2000.....	51
PRM20PNT.....	50, 55
PRM20SRT.....	51, 53
PRM2500.....	53
PRM2500Z.....	53
PRM30SBC.....	54
PRM33SBP.....	55, 58
PRM3500.....	65
PRM4500.....	64
PRM50PTPD.....	65
PRM50STPD.....	64
SS1000.....	69
SS1000C.....	68
SS3000.....	71
SS4500.....	60, 70

## Next Level Apparel

3600.....	30, 31
3601.....	32
5033.....	42, 43
5080.....	44, 45
5083.....	46, 47
6200.....	40, 41
6210.....	33, 34, 35
6211.....	36, 37
6600.....	38, 39
9000.....	48, 85, 86
9643.....	48, 49

## Shaka Wear

SHALS.....	72
SHBJ.....	78, 84
SHGD.....	73
SHHTDS.....	74
SHPJ.....	77
SHTHRM.....	75
SHVBJ.....	79
SHWJ.....	76





ON THIS PAGE:  
BELLA + CANVAS 3945 in Strobe





