

SHAKA WEAR

STREETWEAR ESSENTIALS

STREETWEAR ESSENTIALS



CREATED IN LOS ANGELES, SHAKA WEAR EMBODIES THE URBAN STREETWEAR CULTURE. PROMOTING A LIFESTYLE OF INDIVIDUALITY AND SELF-EXPRESSION, SHAKA WEAR IS YOUR GO TO STREETWEAR BASICS.

TABLE OF CONTENTS

T-Shirts

Max Heavyweight Short Sleeve.....	01 - 02
Max Heavyweight Garment Dye.....	03 - 04
Max Heavyweight Tie Dye.....	05 - 06
Garment Dye Designer Tee.....	07 - 08
Garment Dye Reverse Tee.....	09 - 10
Max Heavyweight Garment Dye Drop Shoulder.....	11 - 12
CVC Heavyweight Short Sleeve.....	13
Retro Heavyweight Short Sleeve.....	14
V-Neck Short Sleeve.....	15 - 16
Ringspun Cotton Crewneck.....	17
Comfort Short Sleeve.....	18
Active Short Sleeve.....	19 - 20

Tops

Baseball Jersey.....	21 - 22
Polo Short Sleeve.....	23 - 24
Raglan 3/4 Sleeve.....	25
Tank Top.....	26

Long Sleeves

Heavyweight Spandex Thermal.....	27
Heavyweight Thermal Long Sleeve.....	28
Max Heavyweight Long Sleeve.....	29 - 30
Active Long Sleeve.....	31 - 32
Max Heavyweight Long Sleeve Garment Dye.....	33 - 34

Outerwear

Los Angeles Garment Dye Hoodie.....	35 - 36
12.0 oz. Heavyweight Hoodie.....	37 - 38
Garment Dye Double Zip Hoodie.....	39 - 40
Sherpa Jacket.....	41 - 42
Varsity Bomber Jacket.....	43 - 44
Coach Jacket.....	45 - 46
Plaid Flannel Jacket.....	47 - 48
Plaid Flannel Shirt.....	49 - 50
Bomber Jacket.....	51 - 52
Insulated Mechanic Jacket.....	53 - 54
Windbreaker Jacket.....	55 - 56

Bottoms

Plaid Shorts.....	23 - 24
Los Angeles Garment Dye Sweatpants.....	35 - 36
Twill Cargo Pants.....	57 - 58
Raw Denim Jeans.....	59 - 60
Fleece Joggers.....	61
Mesh Shorts.....	62
Cargo Shorts.....	62
Fleece Jogger Shorts.....	63 - 64
Garment Dye Terry Shorts.....	65 - 66
PE Mesh Shorts.....	67 - 68
Nylon Running Shorts.....	69 - 70

Shaka Kids

Kids' Thermal.....	71
Kids' Raglan.....	71
Kids' Crew SS.....	71
Kids' V-Neck.....	72
Kids' Crew LS.....	72
Kids' Tank Top.....	72
Kids' Baseball Jersey.....	72
Kids' Plaid Shorts.....	72

Accessories

Logo Beanies.....	73
Long Crew Socks.....	73

Classic

A-Shirt.....	73
--------------	----

Terms & Conditions

74

Size Chart

75 - 81



**7.5 MAX
HEAVYWEIGHT
OZ SHORT SLEEVE**

Bringing you the most versatile heavyweight t-shirt, our Max Heavyweight is a classic boxy fit popularized in the 90's streetwear scene. This timeless t-shirt is still a statement piece for any occasion.

16 singles
 100% USA Cotton
 H. Grey & H. Black 90% USA Cotton / 10% Polyester
 C. Grey 50% USA Cotton / 50% Polyester
 7.5 oz. 245 - 255 gsm

Available sizes:
S - 7XL

Tall sizes:
L - 5XL





**7.5 MAX
HEAVYWEIGHT
OZ GARMENT DYE**

These Garment Dye tees are nothing to play with.

Shrink-free washed out Max Heavyweight Tees.

Pigment / Reactive-washed for a vintage look.

Oversized fit with spandex collar for a trendy look.

That's streetwear.

16 singles
100% USA Cotton
7.5 oz. 245 - 255 gsm

**Available sizes:
XS - 5XL**





7.5 MAX HEAVYWEIGHT OZ T I E D Y E

16 singles
100% USA Cotton
7.5 oz. 245 - 255 gsm

Available sizes:
S - 3XL



Milky Way



Black/White



Navy/White



Classic Rainbow



Sherbet Rainbow

Our Los Angeles inspired, first oversized, heavyweight, Tie Dye shirt.



9.0 OZ GARMENT DYE *Designer Tee*

24 singles twist
100% Cotton
9.0 oz. 300 gsm

Available sizes:
S - 2XL



Shadow



Mocha



Black



White

Introducing our NEW 9.0 oz Designer Tee. Easily the highest quality t-shirt to add to our streetwear essentials line up. The Designer Tee produced with the highest quality cotton twisted and knitted to create the heaviest t-shirt we've ever developed. It is garment dyed and acid washed to achieve the look and feel of a superb, luxury streetwear essential t-shirt. As the name states, this is truly a Designer Tee.



**6.5 MAX
HEAVYWEIGHT
GARMENT DYE
0Z REVERSE TEE**

18 singles
100% USA Cotton
6.5 oz. 215 - 225 gsm

**Available sizes:
S - 3XL**



Black



Shadow



White

These tees are treated through our famous dyeing process to our regular garment dyed shirts. Features include an exposed neck rib cover stitch and reversed shoulder tape.



7.5 MAX
HEAVYWEIGHT
GARMENT DYE
0Z DROP SHOULDER

16 singles
100% USA Cotton
7.5 oz. 245 - 255 gsm

Available sizes:
S - 3XL



White



Shadow



Black



Cream



Oatmeal



Mocha



Peach

***NEW**

The drop shoulder tees have a lowered shoulder tape and slightly cropped waist to provide the boxiest fit. Treated in the same dye process as our garment dyed collection.



6.7 CVC HEAVYWEIGHT OZ SHORT SLEEVE

The heaviest CVC in the industry, this is a bi-blend of the softest cotton and polyester. Put this t-shirt on and you'll know the true meaning of quality.

16 singles
60% Combed Ring-Spun USA Cotton
40% Polyester
6.7 oz. 220 - 225 gsm

Available sizes:
S - 5XL



Black H. Grey White

6.5 RETRO HEAVYWEIGHT OZ SHORT SLEEVE

A modern twist on our Max Heavyweight shirt, the Retro Heavyweight is the softest heavyweight in the industry. By bringing you the retro look with the drop shoulder fit, this tee is on trend and is a perfect compliment to today's stylish streetwear scene.

16 singles
60% Combed Ring-Spun USA Cotton
6.5 oz. 220 - 225 gsm

Available sizes:
S - 5XL



Black D. Grey White



Green Navy Red



6.2 V-NECK 0Z SHORT SLEEVE

16 singles
100% USA Cotton
H. Grey 90% USA Cotton / 10%
Polyester
6.2 oz. 205 - 215 gsm

Available sizes:
XS - 7XL





4.3 RINGSPUN COTTON OZ CREWNECK

Our 100% ringspun fitted cotton crewneck brings you a soft, durable t-shirt with a classic fit. At 4.3 oz/ yd² in weight, this is the perfect tee to be worn as an undershirt or casually with a pair of jeans.

30 singles
100% Ring-Spun Cotton
4.3 oz. 150 gsm

Available sizes:
S - 3XL



Black

White

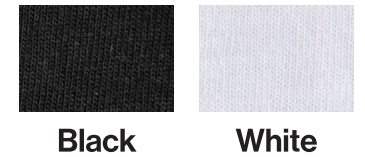


5.4 COMFORT OZ SHORT SLEEVE

Our new COMFORT tee is the perfect t-shirt for printing and for everyday wear. The COMFORT tee is the perfect balance between quality and price. Made of 100% USA 18 singles cotton and at a weight of 180 gsm / 5.4oz/yd², the COMFORT tee is the perfect combination of durability and comfort.

18 singles
100% Cotton
5.4 oz. 180 gsm

Available sizes:
S - 3XL



Black

White



6.0 ACTIVE

0Z SHORT SLEEVE

18 singles
 100% USA Cotton
 H. Grey, H. Black: 90% USA Cotton / 10% Polyester
 C. Grey, S. Green, Lime: 50% USA Cotton / 50% Polyester
 6.0 oz. 200 - 210 gsm

Available sizes:
 S - 5XL
 Available sizes:
 S - 7XL

(Black, White, H. Grey, C. Grey, Navy, Red, Royal)



The look and feel that everyone is familiar with, our Active short sleeve is the go-to shirt for screen printers and those with an active lifestyle alike.



7.5 OZ BASEBALL JERSEY

16 singles
100% USA Cotton
H. Grey: 90% USA Cotton / 10% Polyester
7.5 oz. 245 - 255 gsm

Available sizes:
S - 5XL



Black



H. Grey



Navy



Red



Royal



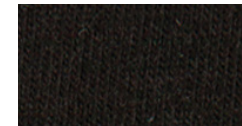
White



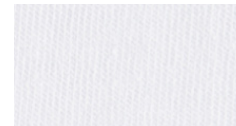
60% Cotton / 40% Polyester
6.2 oz. 210 gsm

Available sizes: S - 5XL

6.2 POLO OZ SHORT SLEEVE



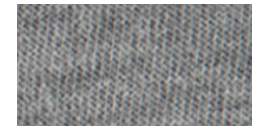
Black



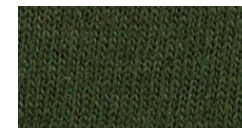
White



Navy



H. Grey



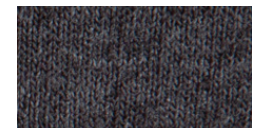
H. Green



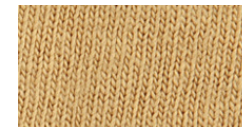
Purple



Royal



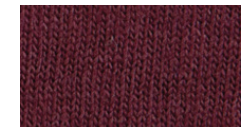
C. Grey



Khaki



S. Blue



Burgundy

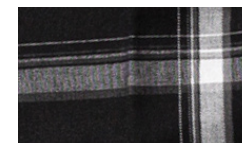


Red

60% Cotton / 40% Polyester
5.6 oz.

Available sizes: S - 5XL

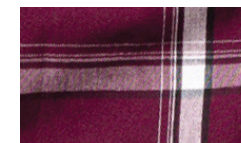
5.6 PLAID OZ SHORTS



Black



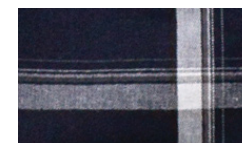
Brown



Burgundy



Grey



Navy



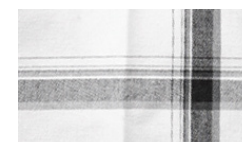
Olive



Red



Royal



White



Khaki



S. Blue

6.0 RAGLAN

0Z 3/4 SLEEVE



White / Black

White / Red

White / Green

White / Royal



White / Camo G.

Black / Camo G.

Olive / Camo G.

Camo G. / Black



H. Grey / Black

H. Grey / Red

H. Grey / Navy

H. Grey / Royal



Black / H. Grey

Black / White

C. Grey / Black

H. Grey / Burgundy



White / Navy

White / Burgundy

18 singles
100% USA Cotton
H. Grey 90% USA Cotton / 10% Polyester
C. Grey 50% USWA Cotton / 50% Polyester
6.0 oz. 195-205 gsm

Available sizes:
S - 5XL



6.0 TANK

0Z TOP

Soft-spun cotton

Set-on self-fabric neck and arm-holes with double-needle stitching

Double-needle stitched bottom hem

18 singles
100% USA Cotton
H. Grey 90% USA Cotton / 10% Polyester
6.0 oz. 195 - 205 gsm

Available sizes:
S - 5XL



Black

Burgundy

Camo Green



D. Grey

H. Grey

Navy



Red

Royal

White



9.5 HEAVYWEIGHT SPANDEX 0Z THERMAL

60% Cotton / 35% Polyester / 5% Spandex
9.5 oz.

Available sizes:
S - 5XL



9.0 HEAVYWEIGHT THERMAL 0Z LONG SLEEVE

18 Singles
100% USA Cotton
H. Grey 90% USA Cotton / 10% Polyester
C. Grey 50% USA Cotton / 50% Polyester
9.0 oz.

Available sizes:
XS - 5XL



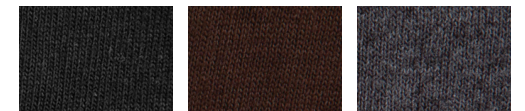


7.5 MAX HEAVYWEIGHT 0Z LONG SLEEVE

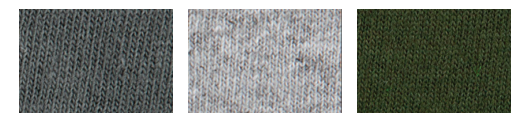
Bringing you the most versatile heavyweight shirt, our Max Heavyweight is a classic boxy fit popularized in the 90's streetwear scene. This timeless long sleeve is still a statement piece for any occasion.

16 singles
100% USA Cotton
H. Grey 90% USA Cotton / 10% Polyester
C. Grey 50% USA Cotton / 50% Polyester
7.5 oz. 245 - 255 gsm

Available sizes:
S - 7XL
Tall sizes:
XL - 5XL



Black Brown C. Grey



D. Grey H. Grey H. Green



Navy Red Royal



White



6.0 ACTIVE OZ LONG SLEEVE

The look and feel that everyone is familiar with, our Active long sleeve is the go-to shirt for screen printers and those with an active lifestyle alike.

18 singles
 100% USA Cotton
 H. Grey 90% USA Cotton / 10% Polyester
 C. Grey 50% USA Cotton / 50% Polyester
 S. Green 50% USA Cotton / 50% Polyester
 6.0 oz. 200 - 210 gsm

Available sizes:
 S - 5XL





7.5 MAX HEAVYWEIGHT LONG SLEEVE OZ GARMENT DYE

16 singles
100% USA Cotton
7.5 oz. 245 - 255 gsm

Available sizes:
S - 3XL



White



Shadow



Black



Cream



Oatmeal



Mocha



Peach

***NEW**



Los Angeles
13.5 HEAVYWEIGHT
 GARMENT DYE
0Z HOODIE

100% Cotton
 Shrink Free
 Garment Dye
 13.5 oz. 455 gsm

Available sizes:
S - 3XL



Black Shadow Navy Mocha Cream

Los Angeles
13.5 HEAVYWEIGHT
 GARMENT DYE
0Z SWEATPANTS

100% Cotton
 Shrink Free
 Garment Dye
 13.5 oz. 455 gsm

Available sizes:
S - 3XL



Black Shadow Navy Mocha Cream



12.0 HEAVYWEIGHT OZ HOODIE

60% Cotton / 40% Polyester
12.0 oz. 400 gsm

Available sizes:
S - 5XL



C. Grey



Navy



H. Grey



Red



Black



D. Green



Royal



12.0 OZ GARMENT DYE DOUBLE ZIP HOODIE

100% Cotton
Shrink Free
Garment Dye
12.0 oz. 400 gsm

Available sizes:
S-3XL



Navy



Shadow



Mocha



Black



10.0 SHERPA OZ JACKET

100% Polyester
10.0 oz. 340 gsm

FEATURES:

- YKK Zippers
- Hidden side pocket
- Heavy polyester chest pocket
- Double sided sherpa
- Adjustable toggles
- Elastic cuff hem
- Stand collar

Available sizes:

S - 3XL



Black

Cream

Navy

VARSITY BOMBER JACKET

Shell: 100% Nylon 3.0 oz. (100 g/m²) - Water-resistant

Lining: 100% PolyEncryption 1.8 oz. (58 g/m²)

Padding: 100% Poly 2.36 oz. (80 g/m²)

Rib: 100% Poly 2x1; 17.2 oz. (580 g/m²)

Available sizes:
S - 3XL



Black



Red



Royal



Navy



COACH JACKET

Shell: 100% Nylon 1.7 oz. (57 g/m²) - Water-resistant

Lining: 100% Polyester 3.6 oz. (120 g/m²)

Available sizes:

S - 5XL



Black

Burgundy

Navy

D. Grey



H. Green

Royal

The Coach Jacket is a staple among streetwear brands. Shaka Wear is bringing you a coach jacket that is of high quality which is water resistant and lined with polyester for warmth. The collar is padded so you can pop the collar to look cool or to stay warm.

Draw strings on the bottom of the jacket gives you the choice to tighten the bottom opening or to let loose for style. Dyed to match snap buttons and lycra infused cuffs add to the details of our coach jacket. Look cool and on trend with this jacket!



PLAID FLANNEL JACKET

Shell: 60% Cotton / 40% Polyester
Lining: 90% Cotton / 10% Polyester Single
Sleeve Lining: 100% Quilted Polyester

Available sizes:
S - 5XL



Black



Navy



Red



Dark Grey

Our new Plaid Flannel Jacket is made with patterns inspired by Los Angeles. Polyester, diamond-stitched lining, and a durable cotton shell give it a timeless look. The perfect compliment to the perfect Los Angeles weather which can be worn year-round.



PLAID FLANNEL OVERSHIRT

60% Cotton / 40% Polyester
5.9 oz. 200 gsm

Available sizes:
S - 5XL



Cream / Navy



Red / Black



Tan / Brown



Shadow / Black



Royal / Black

Timeless flannels highlighting unique colorways, the Shaka Wear heavy flannels feature yarn dyed fibers with heavy knitting to create a streetwear essential straight from Los Angeles.

BOMBER JACKET

Shell: 100% Nylon 3.1 oz. Water-resistant
Lining: 100% Polyester
5.3 oz.

Available sizes:
S - 3XL



Black Burgundy Olive Purple Navy

Shaka Wear brings you the most up-to-date streetwear trend with our Bomber Jacket while staying true to the classic look and feel. Our Bomber Jacket is thick and durable while maintaining a comfortable fit with slightly bigger armholes. It is constructed with heavy duty cuffs and ribbing on the bottom of the jacket for maximum quality and a premium look and feel. Don't let the price fool you, this is not a cheap jacket; made for quality.



INSULATED MECHANIC JACKET

Shell: 65% Polyester / 35% Cotton
8.0 oz. 285 gsm

Inner Fabric: 100% Polyester Quilted Diamond Stitch
100% Polyurethane Foam

FEATURES:

Front Pockets
Arm Pockets
Adjustable Waistband

Available sizes:

S - 3XL



Black



Navy



Dark Grey

Rugged and durable with diamond stitch lining and an adjustable waistband. You already know, no logos on the outside of the jacket so you can make it your own.



WINDBREAKER JACKET

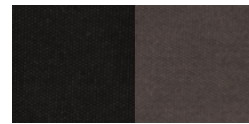
Shell: 100% Polyester Water-resistant 3.0 oz.

Lining: 65% Cotton / 35% Polyester 5.6 oz.

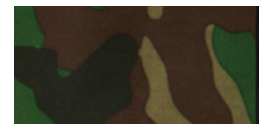
Rib: 100% Polyester 19.2 oz.

Available sizes:

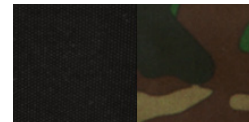
S - 3XL



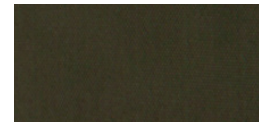
Black /
Grey



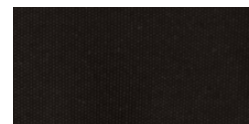
Camo G.



Black /
Camo G.



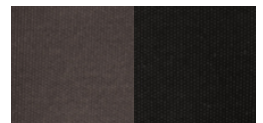
Olive



Black



White /
Black



Grey /
Black



TWILL CARGO PANTS

65% Cotton / 35% Polyester
8.5 oz. 285 gsm

Available sizes:
30" - 44"

Inseam: 31"



Dark Grey



Navy



Khaki



Black



12.0 RAW DENIM OZ JEANS

100% Cotton
12.0 oz.

Available sizes:
30" - 44"

Inseam: 30", 32"

RAW

Raw denim is dry or unwashed denim. The denim has not undergone any of the usual washing and distressing processes from mass produced brands. It comes straight off the loom and is cut and sewn into jeans and then sold to you.

Shaka Wear's raw denim allows the wearer to personalize the pants to their unique shape, with creases and fade marks forming to their body type.

Tell your story with Shaka Wear's raw denim.

STONE WASHED

The process of stone washing involves placing denim into an industrial washer along with large stones. The stones wear down the stiff denim fabric while it's being washed to give the denim a worn-in look, increasing softness and flexibility. Shaka Wear's straight fit, stone washed denim comes in two colors, dark and light blue, bringing you a comfortable, aesthetically beautiful streetwear look.



Black

Raw Black

Raw Indigo

Medium Stonewash

Light Stonewash

8.5 FLEECE JOGGERS

Fabric: 60% Cotton Fleece / 40% Polyester
8.5 oz.
Bottom Rib: 60% Cotton Fleece / 40% Polyester
10.7 oz.

Available sizes: S - 5XL



Black

H. Grey

C. Grey

Navy

Burgundy



MESH SHORTS

Shell: 100% Polyester 5.4 oz.
Lining: 100% Polyester 2.4 oz.

Available sizes: S - 5XL



CARGO SHORTS

100% Twill Cotton 8.3 oz.

Available sizes: 30" ~ 52"





8.5 FLEECE JOGGER OZ SHORTS

Fabric: 60% Cotton Fleece / 40% Polyester
8.5 oz. 285 gsm

Available sizes:
S - 5XL



Black



H. Grey



Red



Navy



Beige



Charcoal



9.0 GARMENT DYE TERRY SHORTS

100% USA Cotton | Shrink Free | Garment Dye
9.0 oz. 300 gsm

Available sizes:
S-3XL



Black



Mocha



Cream



Shadow



PE MESH SHORTS

Outer Lining: 100% Polyester
5.9 oz. 200 gsm

Inner Lining: 100% Polyester
3.0 oz. 100 gsm

Available sizes:
S - 3XL



Black



Mocha



Moss Green



Dark Grey



Mustard



Navy



RUNNING SHORTS

Outer Lining: 100% Polyester
4.0 oz. 135 gsm
Inner Lining: 100% Polyester
2.5 oz. 85 gsm

Available sizes:
S - 3XL



Black



Navy



Moss Green



Dark Grey



Royal



Red

SHAKA KIDS

8.0 KIDS OZ THERMAL

18 Singles - 6.0 oz. - 100% USA Cotton
H Grey 90% Cotton / 10% Polyester Available sizes: XXS - XL



6.0 KIDS OZ RAGLAN

18 Singles - 6.0 oz. - 100% USA Cotton
H Grey 90% Cotton / 10% Polyester Available sizes: XXS - XL



6.0 KIDS OZ CREW SS

18 Singles - 6.0oz - 100% USA Cotton
H Grey 90% Cotton / 10% Polyester Available sizes: XXS - XL



6.0 KIDS OZ V-NECK SS

18 Singles - 6.0 oz. - 100% Cotton
H Grey 90% USA Cotton / 10% Polyester

Available sizes: XXS - XL



6.0 KIDS OZ CREW LS

18 Singles - 6.0 oz. - 100% USA Cotton

Available sizes: XXS - XL



6.0 KIDS OZ TANK TOP

18 Singles - 6.0 oz. - 100% USA Cotton

Available sizes: XXS - XL



6.0 KIDS OZ BASEBALL JERSEY

18 Singles - 6.0 oz. - 100% USA Cotton
H Grey 90% Cotton / 10% Polyester

Available sizes: XXS - XL



KIDS PLAID SHORTS

5.6 oz. - 60% Cotton / 40% Polyester

Available sizes: S - XL



LOGO BEANIE

100 % Acrylic
Foldable Cuff

Available sizes:
One size



Dark Grey

Black

Navy

Neon Yellow

Brown

LONG CREW SOCKS

100% Cotton

Available sizes:
One size



A-SHIRT

5.9 oz. 195-205gsm
100% Cotton
H. Grey 90% Cotton / 10% Polyester

Available sizes:
S - 5XL



Black

H. Grey

White

TERMS AND CONDITIONS

Wholesale Account Qualifications

Shaka Wear is a wholesale-based company and does not sell garments to the general public. To set up a wholesale account, contact customer service at (323) 234-7979 or email us at info@shakawear.com. A valid and active resale number is required in order to be considered.

Garment Specifications

Shaka Wear strives to bring quality and satisfaction, and will occasionally make adjustments and updates to garment specifications. Current inventory may include a balance of garments from a previous specification, Shaka Wear ships by the FIFO (First In, First Out) accounting practice. Please contact customer service with any question.

Styles, Colors, and Inventory

For the most current listing of styles, colors, sizes, and inventory, visit our website at www.shakawear.us. Products are stocked based on demand and sales. Shaka Wear reserves the right to discontinue styles, colors, and sizes without prior notification.

Payment and Terms

We accept cash, credit card, approved company and personal checks, money orders, and cashier's checks. Term payments are offered to buyers that have built sufficient credit history with Shaka Wear. All terms orders must be pre-approved by Shaka Wear and its factoring company.

Prices

Prices are subject to change without notice. Pricing is calculated by quantity. For large volume pricing, please contact your representative.

Placing An Order

Most in-stock, credit approved placed before the shipping cutoff will ship the same day. Please contact your sale representative for details. Additions to processed orders will be placed as new order under a new purchased order number.

Confirmations

If you do not receive a confirmation, your order was not placed. Shaka Wear assumes no responsibility for non-confirmed orders. Please contact customer service if you do not receive an order confirmation.

Shipping

Shaka Wear will ship merchandise as specified by the customer. All freight claims for missing or damaged merchandise must be filed directly with the carrier. Please notify your sales representative when shipping to a residential address. Shipping to a residential address will incur additional fees. Buyer is responsible for additional residential shipping fees. All Shaka Wear orders are shipped "signature required." All merchandise will be shipped FOB origin.

Pickup Orders

Customer pickup service is available from 8:30am - 5:00pm PST, Monday - Friday. For your convenience, please call ahead to confirm your order pickup time.

Return Policy

All sales are not subject to a refund. In some cases, only merchandise exchanges or store credit may be issued. If an order cancellation is necessary, a written request to the manufacturer must be approved before any order can be cancelled. All returns will not have a restocking fee for 7 days if the returned merchandise is returned in unopened condition with the manufacturers' seal. If the package is returned in opened condition, there is a minimum 10% restocking fee. 20% restocking charge on ALL RETURNED GOODS FOR CREDIT after 7 days. It is the customer's responsibility to bring the products to our facility for exchange. No store credit is issued after 15 days. (Absolutely no returns for special orders.) \$25.00 charge for any returned checks. Claims for any damage must be made within 2 days upon receipt of merchandise and all items returned for credit must be in the original packaging with all the parts included. Price on this invoice does not include shipping and handling fees. Shipping and handling are non-refundable. (Including but not limited to all refused and unaccepted packages.)

Max Heavyweight Short Sleeve | 16 Singles | 7.5 oz | 245-255gsm

	S	M	L	LT	XL	XLT	2XL	2XLT	3XL	3XLT	4XL	4XLT	5XL	5XLT	7XL
Chest	18	20	22	22	24	24	26	26	28	28	30	30	32	32	34
Length	29	30	31	32	31½	33	33	35	35	37	37	39	39	40	41

Max Heavyweight Long Sleeve

Sleeve	31½	33½	35½	35½	37	37	39	39	40½	40½	41¾	41¾	43	43	44½
--------	-----	-----	-----	-----	----	----	----	----	-----	-----	-----	-----	----	----	-----

Active Short Sleeve/ Comfort | 18 Singles | 6.0 oz | 200-210gsm

	S	M	L	XL	2XL	3XL	4XL	5XL
Chest	18	20	22	24	26	28	30	32
Length	27	29	31	32	33	34	35½	36½

Active Long Sleeve

Sleeve	30½	32	33¾	35¾	37¾	40¼	41¾	43
--------	-----	----	-----	-----	-----	-----	-----	----

CVC Heavyweight Short Sleeve | 16 Singles | 6.7 oz | 220-225gsm

	S	M	L	XL	2XL	3XL	4XL	5XL
Chest	18	20	22	24	26	28	30	32
Length	28	29	31	32	33	34	35½	36½

Retro Heavyweight Short Sleeve | 16 Singles | 6.5 oz | 220-225gsm

	S	M	L	XL	2XL	3XL	4XL	5XL
Chest	18	20	22	24	26	28	30	32
Length	29½	30½	31½	32½	34½	36½	38½	40

V-Neck Short Sleeve | 16 Singles | 6.2 oz | 205-215gsm

	XS	S	M	L	XL	2XL	3XL	4XL	5XL	7XL
Chest	16½	18	20	22	24	26	28	30	32	34
Length	26	28	29	30	31	32½	34	36	37	38

Max Heavyweight Garment Dye / Tie Dye | 16 Singles | 7.5 oz | 245-255gsm

	XS	S	M	L	XL	2XL	3XL	4XL	5XL
Chest	17½	18½	20½	22½	24½	26½	28	30	32
Length	26½	28½	29½	30½	31	33	35	37	39

Garment Dye Reverse Tee | 18 singles | 6.5 oz | 215-225gsm

	XS	S	M	L	XL	2XL	3XL		
Chest	17½	18½	20½	22½	24½	26½	28		
Length	26½	28½	29½	30½	31	33	35		

Max Heavyweight Long Sleeve Garment Dye | 16 singles | 7.5 oz | 245-255gsm

	S	M	L	XL	2XL	3XL		
Chest	18¾	20¾	22¾	24¾	26½	28		
Length	28	29	30	30½	32	34		
Sleeve	22	23	24	25	26	26½		

Max Heavyweight Garment Dye Drop Shoulder | 16 singles | 7.5 oz | 245-255gsm

	S	M	L	XL				
Chest	22¾	24¾	26½	28				
Length	27	27½	29½	31½				
Sleeve	9¼	10	10¼	10½				

Garment Dye Designer Tee | 24 singles twist | 9.0 oz | 300gsm

	S	M	L	XL	2XL			
Chest	19½	21½	32½	25½	27¼			
Length	28	29	30	30½	32			
Sleeve	8½	8¾	9½	10¼	10½			

Ringspun Cotton Crewneck | 30 Singles | 4.3 oz | 150gsm

	S	M	L	XL	2XL	3XL		
Chest	18½	20¼	22	23¾	25¾	27¾		
Length	28	29	30	31	32	33		

Baseball Jersey | 16 Singles | 7.5 oz | 245-255gsm

	S	M	L	XL	2XL	3XL	4XL	5XL
Chest	20½	22	23	24	26	28	30	32
Length	29½	30½	31½	32	33	34	36	37½

Heavyweight Thermal Long Sleeve | 18 Singles | 9.0 oz | 300gsm

	XS	S	M	L	XL	2XL	3XL	4XL	5XL
Chest	17	18	20	22	24	26	28	29½	31
Length	27	29	30	31	33	35	36	37	38
Sleeve	27	28	30	31¼	32¼	34½	36	37¼	38¾

Heavyweight Spandex Thermal L/S | 18 Singles | 9.5 oz | 320gsm

	S	M	L	XL	2XL	3XL	4XL	5XL
Chest	17	19	20½	22	24	25½	27½	29½
Length	28	29	30	31	32	33	34	35
Sleeve	21	22	23	24	25	26	26½	27

Tank Top | 18 Singles | 6.0 oz | 195-205gsm

	S	M	L	XL	2XL	3XL	4XL	5XL
Chest	18	20	22	24	26	28	30	32
Length	27	29	31	32	33	34	35	36

Raglan 3/4th Sleeve | 6.0 oz | 195-205gsm

	S	M	L	XL	2XL	3XL	4XL	5XL
Chest	18	20	22	24	26	28	30	32
Length	28	29½	31	32	33	35	36½	38
Sleeve	25⅜	25⅞	26½	27⅝	28⅞	30½	31½	32½

Polo Short Sleeve | 6.2 oz | 210gsm

	S	M	L	XL	2XL	3XL	4XL	5XL
Chest	20	21	22	23½	25	27	28½	30
Length	28	29	30	31	32	33	34	35

Los Angeles Heavyweight Garment Dye Hoodie | 13.5 oz | 455gsm

Garment Dye Double Zip Hoodie | 12.0 oz | 400gsm

	SM	LX	L2	XL	3XL4	XL	5XL
Chest	21	23	25	27	28	30	34
Length	27	28	29	30	30½	31	32
Sleeve	24½	25	25½	26	26½	27	28

Los Angeles Heavyweight Garment Dye Sweatpants | 13.5 oz | 455gsm

	SM	LX	L2	XL	3XL4	XL	5XL
Waist	15	16	17	18	19	20	24
Inseam	30	30	31	31	32	33	33

Heavyweight Hoodie | 13.0 oz | 400gsm

	S	M	L	XL	2XL	3XL	4XL	5XL
Chest	21	23	25	27	28	29	30½	32
Length	27	28	29	29½	30	31	31½	32

Plaid Flannel Jacket | 4.6 oz Shell | 5.0 oz Lining

	S	M	L	XL	2XL	3XL	4XL	5XL
Chest	21	22	23	24½	26	27½	29	30½
Length	29	30	31	32	32½	33	33½	34
Sleeve	34¾	35¾	36¾	38	38¾	39½	40½	41½

Plaid Flannel Shirt | 5.9 oz | 200gsm

	S	M	L	XL	2XL	3XL	4XL	5XL
Chest	21¼	22½	23¾	25	26¼	27½	28¾	30
Length	30½	31	31½	32	32½	33	33¼	33½
Sleeve	25½	26	26½	27	27½	27¾	28	28¼

Insulated Mechanic Jacket | 8.0 oz | 285gsm

	S	M	L	XL	2XL	3XL		
Chest	22	24½	25½	27	29	30		
Length	26	27	27	28¾	29	29		
Sleeve	25½	26	26½	26½	26½	26½		

Sherpa Jacket | 10.0 oz | 340gsm

	S	M	L	XL	2XL	3XL		
Chest	23½	24½	25½	26½	28	29½		
Length	27½	28	28½	29	29½	30		
Sleeve	25½	26	26½	27	27½	27½		

Windbreaker Jacket | 3.0 oz Shell | 5.6 oz Lining

	S	M	L	XL	2XL	3XL
Chest	21½	22½	23½	25	26½	28
Length	28	28	28½	29	30½	31½
Sleeve	35½	36½	27½	38½	39¾	41

Coach Jacket | 1.7 oz Water-resistant Shell | 3.6 oz Lining

	S	M	L	XL	2XL	3XL	4XL	5XL
Chest	22	24	25½	27	29	31	32½	34
Length	28	29	30	31	32	33	33½	34
Sleeve	32	33	34	35	36	36½	37	38

Nylon Bomber Jacket | 3.1 oz Shell | 5.3 oz Lining

	S	M	L	XL	2XwL	3XL
Chest	22	23	24	25¼	26½	27½
Length	28	28	28 1/2	29	30	31
Sleeve	35	36	37	38¼	39½	40¾

Varsity Bomber Jacket | 3.0 oz Shell | 1.8 oz Lining

	S	M	L	XL	2XL	3XL
Chest	22	23	24	25¼	26½	27¾
Length	26½	27½	28	28½	29½	30½
Sleeve	31½	32	32½	33½	34½	35½

Classic Crew | 30 Singles, 4.3 oz

	S	M	L	XL	2XL
Ch.	18	19½	21	22½	24½
L.	27½	28½	29½	30½	31½

Classic V-Neck | 30 Singles, 4.3 oz

	S	M	L	XL	2XL
Ch.	18	19½	21	22½	24½
L.	27½	28½	29½	30½	31½

Classic Raglan | 30 Singles, 4.3 oz

	S	M	L	XL	2XL
Ch.	18¼	19¾	21¼	22¾	24¾
L.	28½	29	30	31	32

Classic Tank | 30 Singles, 4.3 oz

	S	M	L	XL	2XL
Ch.	18	19½	21	22½	24½
L.	28	29	30	31	32

Women's Tri-Blend V-Neck | 30 Singles

	XS	S	M	L	XL	2XL
Ch.	15	16	17	18	19½	21
L.	26	26½	27	27½	28¼	28¾

Women's Tri-Blend Crew & Scoop

	XS	S	M	L	XL	2XL
Ch.	15	16	17	18	19½	21
L.	25	25½	26	26½	27¼	27¾

Fleece Jogger Shorts | 8.5 oz | 285gsm

	S	M	L	XL	2XL	3XL	4XL	5XL
Waist	31	32	33	34	35	36	38	40
Inseam	12 ½	13	13	13 ½	13 ¾	14	14	14 ¼

Raw Denim Jeans | 13.0 oz | 100% Cotton

Size	30	32	34	36	38	40	42	44
Waist	31	33	35	37	39	41	43	45
Inseam	32	32	32	32	32	32	32	32
Inseam	30	30	30	30	30	30	30	30
Hip	41½	43½	45½	47½	49½	51½	53½	55½

Twill Cargo Shorts | 8.3 oz | 100% Twill Cotton

	30	32	34	36	38	40	42	44	46	48	50	52
In-seam	12	12½	13	13½	14	14	14	14	14½	14½	14½	14½
Waist	15	16	17	18	19	20	21	22	23	24	25	26

Mesh Shorts | 5.4 oz Shell, 2.4 oz Lining | 100% Polyester

	S	M	L	XL	2XL	3XL	4XL	5XL
Outseam	24	24½	25	25½	25¾	26	26¼	26½
Waist	15½	16	16½	17	17½	18	19	20

Plaid Shorts | 5.6 oz | 60% Cotton, 40% Polyester

	S	M	L	XL	2XL	3XL	4XL	5XL
Outseam	24½	25	25½	25½	26	26	26½	27
Waist	14	15	16	17	18	19	20	21

Twill Cargo Pants | 8.0 oz | 285gsm

Waist	28	30	32	34	36	38	40	42
Inseam	31	31	31	31	31	31	31	31

PE Mesh Shorts | 3.0 oz | 100gsm

	S	M	L	XL	2XL	3XL		
Waist	15	16	17	18	19 ½	21 ½		
Inseam	6 ¼	6 ½	6 ¾	7	7 ¼	7 ¾		

Garment Dye Terry Shorts | 9.0 oz | 300gsm

	S	M	L	XL	2XL	3XL		
Waist	14 ½	16	17	18 ½	20	21		
Inseam	6	6	6	6 ½	6 ½	6 ½		

Fleece Jogger Pants | 8.5 oz | 60% Cotton, 40% Polyester

	S	M	L	XL	2XL	3XL	4XL	5XL
Inseam	29	30	31	31½	32	32½	33	33½
Waist	14	15	16	17	18	19	21	23

Running Shorts | 2.5 oz | 85gsm

	S	M	L	XL	2XL	3XL		
Waist	15 ½	16 ½	17 ½	18 ½	20	21 ½		
Inseam	5 ½	5 ½	5 ¾	5 ¾	6 ¼	6 ¾		

A Shirt | 5.9 oz | 195-205gsm

	S	M	L	XL	2XL	3XL	4XL	5XL
Chest	11½	12½	13½	14½	15½	16½	17½	18½
Length	31	32	33	34	35	36	37	37

Kids' Crewneck L/S | 18 Singles, 6.0 oz

	Chest	Length	Sleeve
XXS	13	18	20
XS	14	19	22½
S	14¾	20	24¾
M	15½	21	26¼
L	16½	22½	28½
XL	17½	24	30

Kids' Tank Top | 18 Singles, 6.0 oz

	Chest	Length
XXS	13	18
XS	14	20
S	14¾	21
M	15½	22
L	16½	23
XL	17½	24

Kids' Crewneck S/S | 18 Singles, 6.0 oz

	Chest	Length	Sleeve
XXS	13	18	11¼
XS	14	19	12
S	14¾	20	12½
M	15½	21	13⅞
L	16½	22½	14
XL	17½	24	15

Kids' Thermal | 18 Singles, 8.0 oz

	Chest	Length	Sleeve
XXS	13	18	19
XS	14	19	20½
S	15	20	22
M	16	21	23½
L	17	22½	25
XL	18	24	26½

Kids' Plaid Shorts | 5.6 oz

	Out-seam	Waist
S	18	11
M	20	12
L	21	13
XL	23	14

Kids' V-Neck | 16 Singles, 8.0 oz

	Chest	Length	Sleeve
XXS	13	18	11¼
XS	14	19	12
S	14¾	20	12½
M	15½	21	13⅞
L	16½	22½	14
XL	17½	24	15

Kids' Baseball Jersey | 18 Singles | 6.0 oz

	Chest	Length	Sleeve
XXS	13	19	11⅝
XS	14	20	12⅝
S	15	21	13⅝
M	16	22	13⅞
L	17	23½	14⅝
XL	18	25	15⅝

Kids' Raglan | 18 Singles, 6.0 oz

	Chest	Length	Sleeve
XXS	13	18½	15
XS	14	19½	16¼
S	14¾	20½	17 ⅝
M	15½	21½	18⅝
L	16½	23	19¾
XL	17½	24½	20 ⅞

SHAKA WEAR

STREETWEAR ESSENTIALS

CONTACT

555 E. Jefferson Blvd, Los Angeles, CA 90011

Phone: (323) 234-7979

Fax: (323) 234-7978

Email: wholesale@shakawear.com

www.shakawear.com

**WORLD
FAMOUS
HEAVYWEIGHT
T-SHIRT**

